



# DEEPER

FEC CONFERENCE 2020 • ONLINE • JULY 23 & 24

# TABLE OF CONTENTS

Message from our President .....	3
<b>AFFILIATE UPDATES.....</b>	<b>4</b>
CSF 2020 Report .....	5
CSF 2020 Budget .....	6
FEC Legacy Fund Report.....	8
FEC Legacy Fund Budget .....	9
Salem4Youth Report .....	10
Miracle Camp Report .....	11
LifeChange Camp Report.....	13
LifeChange Camp Budget .....	14
<b>FEC UPDATES .....</b>	<b>15</b>
Elder Report .....	16
2019 Conference Minutes .....	17
National Church Multiplication Update .....	20
International Church Multiplication Update .....	22
FEC 2019 Balance Sheet .....	24
FEC 2019 Office Budget .....	27
FEC 2020 Year-to-Date Summary .....	28
FEC 2020 Office Year-to-Date Budget .....	31
FEC 2021 Proposed Budget .....	32
401K CERSP .....	33
401K RSP.....	34
Wave Community Church Report.....	35
Harvest Bible Fellowship Report .....	36
<b>FEC PEOPLE .....</b>	<b>37</b>
Current Board Members .....	38
Newly Nominated Members - General Board .....	39
Newly Nominated Members - Elder Board .....	41
<b>SAVE THE DATE - FEC CONFERENCE 2021.....</b>	<b>43</b>

# A MESSAGE FROM OUR PRESIDENT

Dear FEC Family,

Welcome to **DEEPER!** Since we chose the theme for this year's conference, nearly every logistical aspect for our event has changed. But the goal for our time together, and the importance of addressing the deep-down health and well-being of our pastors, churches, and congregations is even more crucial than when we began our planning a whole year ago.

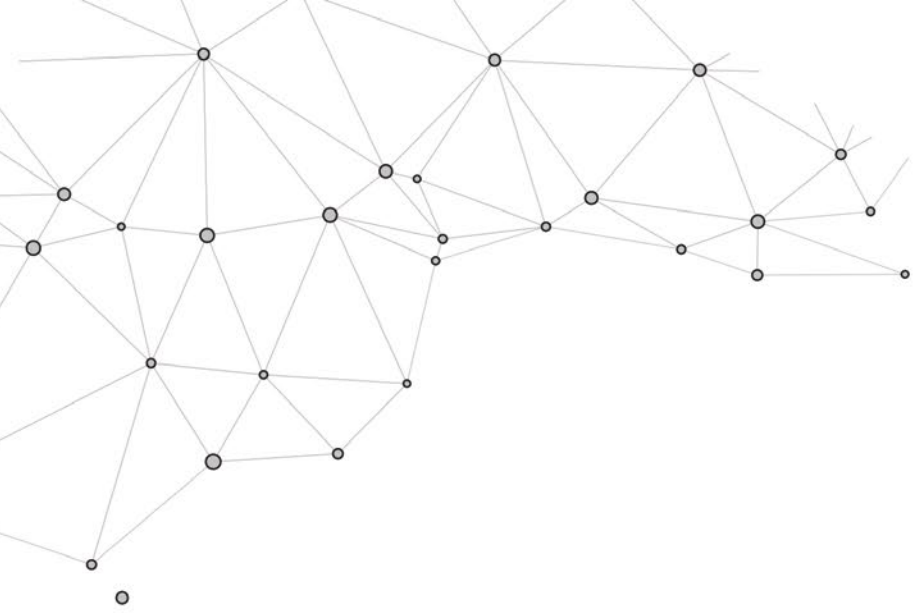
None of us could have predicted the disruption we have experienced in our country, cities, and churches. Even since social distancing was implemented, the stress and tension we face has intensified exponentially with social and racial issues taking center stage. College and seminary did not prepare us for this. Public education and our government did not prepare us for this. Only God and His Word are prepared for this.

My hope is that we will all leave our time together with a better understanding and better prepared to nurture our leaders and churches, who in turn will be healthy and strong enough to meet the needs of our struggling country and world. Without healthy leaders we cannot maintain healthy churches. Without healthy churches, we cannot nurture healthy congregations. Because it is healthy believers, filled with the power that only the Holy Spirit can provide, that will expand His Kingdom and change our world.

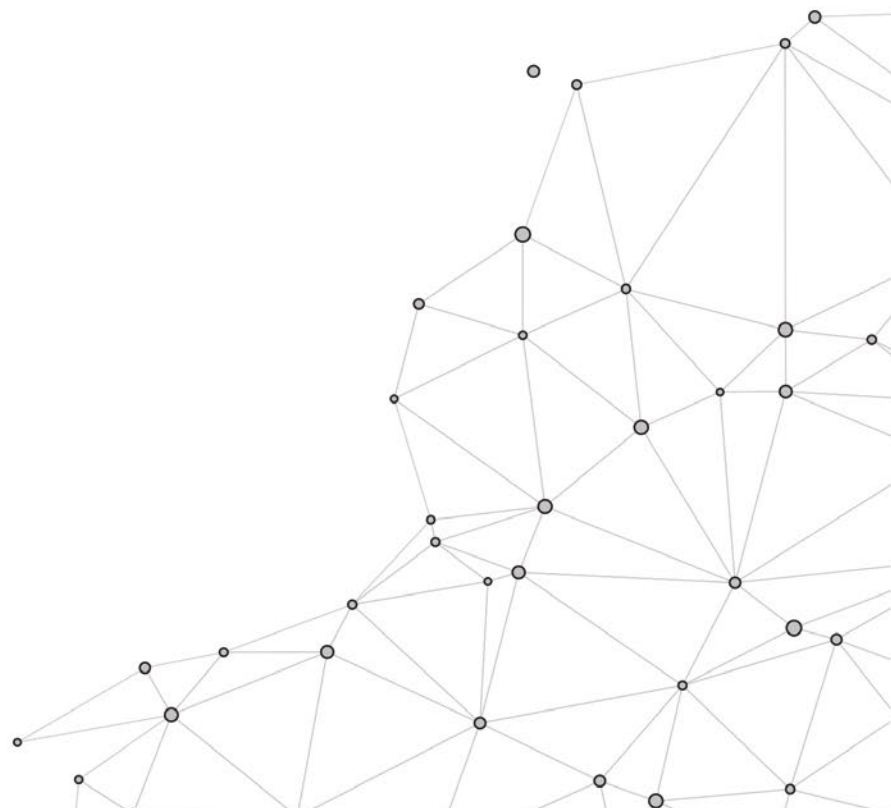
Thank you for being part of Conference this year. I pray that this week will allow each one of us to grow **DEEPER**, so we will be ready for all that God has in store for us.

Growing together,

**Rocky Rocholl**  
FEC President



# **AFFILIATE UPDATES**



# CHRISTIAN SERVICE FOUNDATION

## 2020 REPORT

CSF, started in 1949, is a non-profit affiliate of FEC. The purpose of CSF is to solely serve FEC and its churches and affiliates by:

1. providing loans,
2. paying interest to CSF investors (FEC churches, affiliates and attendees of FEC churches),
3. awarding college scholarships to Sophomores, Juniors, Seniors, Graduate and Doctoral students attending Christian Colleges and Universities, and who attend FEC churches,
4. conducting Legacy education through eNewsletters, CSF website and seminars,
5. managing stock and other gifting transactions on behalf of FEC, etc.

CSF ended its fiscal year 2020 on May 31, 2020. CSF had a Net gain of \$105.6 thousand after making charitable donations of \$119.3 thousand as noted below. Our pre-donations gain for the year was \$224.9 thousand.

CSF donations in FY2020 included:

1. FEC Ministries, \$33,000 (plus office services, FEC received a total of \$65,900 from CSF)
2. Miracle Camp & LifeChange camps - 6 mo. loan payments: \$41,256
3. Christian College Student Scholarships \$45,000

Investment Certificates from FEC congregants, churches and affiliates dropped by \$800 thousand from FY2019 to \$15.34 million. CSF offers interest rates that are considerably above the average bank CD rate. Please consider investing in CSF and supporting CSF's ministry to FEC. It's very important and a win-win.

FEC Church and Affiliate loans dropped \$2.77 million in FY2020 to \$10.30 million, primarily due to extra principal payments by borrowers. Over the next 12 months, as God continues to lead FEC leaders to expand their buildings, we are anticipating additional loan demand of \$13.25 million, less \$5.25 million of loan principal payback for net increase of \$8 million. Thus, a total outstanding loan balance of \$18 million is anticipated. This is a huge increase from recent years and is fueled mostly by maturing church plants progressing from renting space to owning their meeting space.

When the COVID-19 lock-down occurred, the CSF board of directors voted to help FEC borrowers by offering 6-months of interest only payments. About 70% of the borrowers took the interest only payment option. As of July 1, a few of these borrowers have resumed their normal monthly principal and interest payments. CSF received Donor Advised Fund donations of \$43,000 in 2018, \$30,600 in 2019 and \$29,300 in 2020. Of the 2020 DAF donations, CSF retains three percent to support CSF and the rest is distributed to other non-profits per donor advice. This is a wonderful tax planning tool available to all FEC attendees.

We praise God for His abundant provision and a successful year. Thank you FEC church borrowers and investors too! The ministry of CSF would not be possible without your support. Also, a big thank you to the CSF board of directors who have donated many hours of their time and expertise. The current board and a brief bio can be found on the CSF website, [www.ChristianServiceFoundation.org/about-us/board-of-directors/](http://www.ChristianServiceFoundation.org/about-us/board-of-directors/)

It is a pleasure serving with all of you to spread the Gospel of Jesus to a world that desperately needs Him.

**DAVID J. TEAT**  
President

# CHRISTIAN SERVICE FOUNDATION

## CSF Income Statement YTD - 6/01/2019 - 5/31/2020

G/L ACCOUNT	YEAR TO DATE		
<b>REVENUE</b>		<b>OTHER EXPENSE</b>	
Interest - Loans	579,060.42	College Scholarships - General Fund	45,000.00
Realized Gain / Loss on CSF Investments	119,769.05	Camp Scholarship Expense	3,625.00
Realized Gain / Loss on CSF CDs	11,192.81	Donation Expense - General	41,356.00
Unrealized Gain / Loss on CSF Investment	41,811.49	Donation Expense - FEC	45,000.00
Gifts	3,295.00	Donation Expense - DAF	30,105.57
Temp Restricted Gifts - Victor Rupp Scholarship	152.81	Harold R. Meyer Fund Distribution	1,240.20
Permanently Restricted Gifts - Harold R. Meyer Fund	1,240.20	<b>TOTAL OTHER EXPENSE</b>	<b>166,326.77</b>
Temporary Restricted Gifts - Jerry Boyers Internship	9,350.00	<b>TOTAL INCOME (LOSS)</b>	<b>105,615.84</b>
Vendor Goodwill	5,385.00		
<b>TOTAL REVENUE</b>	<b>761,906.78</b>		
<b>OPERATING EXPENSE</b>			
Interest Expense - Investment Certificates	318,267.72		
Interest Expense (Misc./Fund)	1,530.81		
Marketing Expense	5,369.03		
Money Manager Fees	9,174.73		
Board Expense	317.85		
Accounting Services	20,940.00		
Office Expense	4,091.22		
DDI Software & Support	8,130.00		
Administrative Expense	135,388.90		
Legal Expense - Offering Circular	22,787.20		
Legal Expense - State Registration Fees	2,549.13		
Legal Expense - Loans & Misc.	96.25		
Legal Expense - State Filings	7,454.99		
FEC Fair Share Expense	32,900.00		
<b>TOTAL OPERATING EXPENSE</b>	<b>568,997.83</b>		
<b>TOTAL OPERATING INCOME (LOSS)</b>	<b>192,908.95</b>		
<b>OTHER INCOME</b>			
Consulting Revenue	5,925.00		
FLF Endowment Distribution Revenue	36,203.61		
Miscellaneous Income	2,851.10		
Stock Donation Management Fee	202.98		
Donor Advised Fund Contributions	29,328.19		
Donor Advised Fund Management Fee	897.78		
Released from Restrictions Revenue	3,625.00		
<b>TOTAL OTHER INCOME</b>	<b>79,033.66</b>		

# CHRISTIAN SERVICE FOUNDATION

## Balance Sheet - 5/01/2019 - 5/31/2020

### CURRENT BALANCE

ASSETS		FUND BALANCES	
LCB Checking	525,643.74	Board Designated - Emergency Fund	100,000.00
LCB Money Market	5,010.20	Board Designated - Jerry Boyers Internship Fund	12,119.30
Bighthouse Annuity	165,834.47	Board Designated - Donor Advised Funds	46,132.74
SJS Investments Operating Investment Fund	6,682,939.92	Temporarily Restricted Fund - Victor Rupp Scholarships	1,670.94
Lake City Investments - Cetera	900.36	Permanently Restricted Fund - Harold R. Meyer	52,000.00
Accounts Receivable	3,600.00	General Fund Balance	1,800,943.72
Accrued Interest - Church Loans	20,481.94	<b>TOTAL FUND BALANCES</b>	<b>2,092,866.70</b>
Accrued Interest - FEC Loans	2,171.49	<b>TOTAL LIABILITIES AND FUND BALANCES</b>	<b>17,715,907.58</b>
Accrued Interest - Affiliate Loans	5,913.25		
Church Loans	8,606,649.74		
FEC Loans	799,274.83		
Affiliate Loans	917,487.64		
<b>TOTAL ASSETS</b>	<b>17,715,907.58</b>		
LIABILITIES AND FUND BALANCE LIABILITIES			
Accounts Payable - General	12,290.07		
Accounts Payable - College Scholarships	51,000.00		
Accounts Payable - Donations	74,256.00		
Accounts Payable - DAF	46,132.74		
Personal Investment Certificates	11,362,776.78		
Church Investment Certificates	2,301,373.13		
FEC Investment Certificates	966,436.31		
Affiliate Investment Certificates	133,436.95		
Youth Stewardship Investment Certificates	574,214.08		
Deferred Gift Agreements	25,000.00		
Deferred Gift Account	347.60		
Accrued Interest - Personal Investment Certificates	61,262.78		
Accrued Interest - Church Investment Certificates	7,476.99		
Accrued Interest - FEC Investment Certificates	1,458.46		
Accrued Interest - Affiliate Investment Certificates	355.18		
Accrued Interest - Youth Stewardship Investment Certificates	4,601.26		
Accrued Interest - Deferred Gift Agreements	622.55		
<b>TOTAL LIABILITIES</b>	<b>15,623,040.88</b>		

# FEC LEGACY FUND

## 2019 Report

### **FEC Legacy Fund (FLF) CY 2019 Report**

FLF is a non-profit affiliate of FEC. The purpose of FLF is to solely serve FEC and its affiliates by providing and managing long-term endowment gifts for FEC churches and affiliates. Endowment gifts can come from personal donations, church restricted gifts and estate bequests.

Christian Service Foundation (CSF) started FLF in 2017 and opened its first endowment with a donation of \$1.135 million. The CSF named endowment annual distributions of generally 3-5% go back to CSF primarily to support CSF's college scholarships. Additional named endowments totaling \$90.6 thousand were established in 2019 for FEC International Multiplication, FEC National Multiplication, FEC General Ministries, and Miracle Camp. Churches, affiliates and individuals can make donations and bequests to these endowments or establish a new named endowment. Please contact David Teat for further information.

The operating portion of FLF in 2019 had a net gain of \$9,125 which included a further donation from CSF of \$9,309 to cover additional start-up legal and accounting costs. The total set-up costs were approximately \$25,000, all provided by CSF.

### **FEC Legacy Fund CY 2020 YTD Report**

Up through May 31, 2020, FLF operations had a gain of \$3,915 and endowment income of \$79 thousand. One additional endowment was added in January for Archbold Evangelical Church's college scholarships increasing our number of endowments to six and total endowment funds of \$1.34 million.

We praise God for His abundant provision. Thank you FEC General Board, Churches, Affiliates and other donors for your support. Also, a big thank you to the FLF board of directors who have donated many hours of their time and expertise. The current board members are: Scott Wagoner - Chairman, Doug Rupp - Vice-Chairman, Nate Zimmerman - Secretary, David Steiner - Treasurer and Doug Bernath.

It is a pleasure serving with all of you to spread the Gospel of Jesus to a world that desperately needs Him.

**David J. Teat**



# FEC LEGACY FUND

## Balance Sheet as of May 31, 2020

	OPERATIONS	ENDOWMENTS
<b>ASSETS</b>		
Current Assets		
Checking/Savings		
100000 Cash		
101000 Schwab Checking	\$4,352.18	
Total 100000 Cash	\$4,352.18	
Total Checking/Savings	\$4,352.18	
Other Current Assets		
Total 102100 - Due from Endowment Fund	\$13,966.37	
Total 110000 - Investments		\$1,355,313.92
Total Other Current Assets	\$13,966.37	\$1,355,313.92
Total Current Assets	\$18,315.55	\$1,355,313.92
<b>TOTAL ASSETS</b>	<b>\$18,315.55</b>	<b>\$1,355,313.92</b>
<b>LIABILITIES &amp; EQUITY</b>		
Liabilities		
Current Liabilities		
Accounts Payable		
200000 - Accounts Payable		
201000 - Accounts Payable General	\$3,625.96	
Total 200000 - Accounts Payable	\$3,625.96	
Total Accounts Payable	\$3,625.96	
Other Current Liabilities		
202000 - Due to General Fund		\$13,966.37
Total Other Current Liabilities		\$13,966.37
Total Current Liabilities	\$3,625.96	\$13,966.37
Total Liabilities	\$3,625.96	\$13,966.37
<b>EQUITY</b>		
301000 - Unrestricted Net Assets	\$10,780.99	
311000 - Temp Restricted CSF Net Assets		\$1,170,583.36
312000 - Temp Restricted FEC Net Assets		\$31,336.14
313000 - Temp Restricted MCRC Net Assets		\$60,342.38
Net Income	\$3,915.21	\$79,082.06
Total Equity	\$14,696.20	\$1,341,343.94
<b>TOTAL LIABILITIES &amp; EQUITY</b>	<b>\$18,322.16</b>	<b>\$1,355,301.31</b>

## Profit & Loss as of May 31, 2020

	OPERATIONS	ENDOWMENTS
<b>ORDINARY INCOME / EXPENSE</b>		
	Jan - May 20	Jan - May 20
Income		
Total 400900 - FLF Mgmt Fee Revenue	\$5,190.48	
Total 40000 - Unrestricted Revenue	\$5,190.48	
401000 Revenue from Investments		
401110 - Interest - Checking / Savings	\$ .69	
Total 401200 Int & Dividends - Restricted		\$5,496.69
Total 401400 Unrealized G/(L) - Restricted		(\$99,012.59)
Total 401000 Revenue from Investments	\$ .69	(\$93,515.90)
Total 402000 - FLF Restricted Donations		\$182,159.10
Total Income	\$5,191.17	\$89,159.10
<b>EXPENSE</b>		
500020 - General Expenses		
503020 - Investment Management Fees		\$4,886.56
505020 - FLF Mgmt Fee Expense		\$5,190.48
507020 - Office Expense	\$25.96	
Total 500020 - General Expenses	\$25.96	\$10,077.04
510020 - Contract Services		
511020 - Accounting Expense	\$225.00	
512929 - Admin Expense	\$1025.00	
Total 510020 Contract Services	\$1250.00	
Total Expenses	\$1,275.96	\$10,077.04
Net Ordinary Income	\$3,915.21	\$79,082.06
<b>NET INCOME</b>	<b>\$3,915.21</b>	<b>\$79,082.06</b>

# SALEM4YOUTH

## **YOU ARE MAKING A DIFFERENCE!**

In 2013 a young 13-year-old boy from the Chicago suburbs arrived here on the ranch. Little did he know that some 7 years later he would be doing an internship here for the summer as part of his seminary training experience.

Napoleon is a young man with a winsome smile and a true love for God. He will be serving in the cottage. Serving in the very same cottage where he lived while a student here. He brings a depth of understanding and insight to bear with the boys he works with here. They all know that he was a former student here who successfully completed the program and now is thriving as a young adult.

Napoleon is here because YOU were there! You believe in the mission of Salem4Youth and have blessed and supported the work here! So be encouraged with the difference you are, and have been, making over the years! Napoleon is just one example of that wonderful difference! To God be the glory!

## **ZOOMING HOME**

In the midst of the health challenge we are all facing a verb, used infrequently, that suddenly become part of our daily conversations. That word is "Zoom!"

Dictionary.com defines zoom as *1. To move quickly or suddenly with a loud humming or buzzing sound. 2. To fly an airplane suddenly and sharply upward at great speed for a short distance, as in regaining altitude, clearing, and obstacle, or signaling.*

These days we define zoom as "a way to keep in touch." Although the Lord has allowed the ministry to remain open during this time, with thanks to your kindness and support, there have been changes in how we operate. The students cannot leave campus unless they have a doctor appointment and parents are not yet allowed to come visit their sons here on campus. These are a couple of changes. Enter Zoom.

One focus of the ministry is familial reconciliation. We want the boys to be able to communicate with their folks, ideally face to face. Without the ability to visit, oft times have "Zoomed." That old saying, "Absence makes the heart grow fonder", has been the case both for the boys and their families. Although there has not been the ability to get a hug from Mom or Dad, to be able to see them online and visit has been a blessing. This interaction is key to healing.

With one of the definitions of Zoom being, "clearing an obstacle", it fits in this context. Thank you for your ongoing love and support! You are key in this ministry of reconciliation! Bless the Lord!

## **WHEN HARVEST ARRIVES**

*"I was reminded today by a Facebook memory that seeds were planted while my son attended in 2016. I want to continue to tend to this garden trusting God! Oh what a joyous day when the harvest arrives! This ministry is greatly appreciated!"*

- A mom of one of our former students

## **IT'S ABOUT LIFE, NOT ABOUT AN ITEM**

Well, April came and went without our Annual Auction. This year is our 20th year! We are hoping and praying that we can still hold the auction yet this year. Yes, it is our largest and most important fundraising event, but more than that we LOVE hosting you all from the community who love the boys, their families and the ministry! Each year we make a concerted effort to make The Ranch "Shine!"

We absolutely recognize that we cannot do it without your love and support! At this point we are looking at August 22nd as a possible make-up date. For now, just use a pencil to write that on your calendar. We will keep you informed as the time grows closer! Thank you for your essential love and support. You are making a difference!

Although the auction is a fundraising event, truth be told, we do not put our trust in an auction to provide. The Lord and His people have always been so kind in providing for the ministry. So please mark your calendars. We would welcome the opportunity to be your hosts.

# MIRACLE CAMP & RETREAT CENTER

**Summer Camp 2020** is off to a great start! Week #1 of Middle School went well with 130 campers. Senior High School Camp (modified to allow J.H.) started July 12th with 131 campers. We are very thankful camp has started safely with great attendance. Camp, of course, looks much different this year. Our summer staff has been fully engaged (even with the additional Covid practices) and the kids/students are having a great time. Most importantly, the Good News of Jesus Christ is being clearly presented through our speaker, worship team, cabin leaders, and summer staff!

**Summer Camp registrations** - We are projecting to have between 630 to 640 summer campers for this year. This is amazing considering everything related to COVID (our original summer occupancy budget was 900 campers). We are operating at about 50-60% building capacity with "spacing" of small groups of 10. However, praise God that we are able to do camp. Please continue to pray for camp! Pray for safety! Pray that kids would have a great time and learn about Jesus (and respond)! Pray that the state of Michigan would continue to work closely with camps and allow camp to happen!

**Man Camps and Women's Retreats** - As of today, we have 74 men and 90 women registered for our fall Man Camp and Women's retreat. I expect that this would increase as we move through the summer and the fall "outlook" becomes clearer. Please continue to promote this within the FEC and our churches!

**Family Camps** - With MFE (Michigan Family Experience, our 4th of July family camps and additional constituency family events/experiences, we will serve well over 150 people. Thanks so much for bringing your families to camp! If you haven't yet checked out the opportunities - please contact our staff team (or me)!

**Summer Staff** - Our summer staff of over 45 students are doing an amazing job. They have been very creative and resilient in doing "camp different." Please continue to pray for their safety and energy!

**Build The Bridge update - Praise God! We have met and exceeded our original goal of \$150,000.** As of mid July, we have raised nearly \$163,000 in cash and pledges. The "overage" will be set aside to continue to provide resources as we head into the late summer and the very uncertain fall. Any resources raised that are not needed for operations would "roll over" into funding for capital improvements, maintenance projects, etc.

## What's next?

We have a Board of Directors meeting scheduled for July 25th. At that meeting we will be discussing the next phase(s) of our fundraising efforts. There are 4 areas of need:

1. Operations Cash Flow - Late summer through Dec. 31.
2. Facility Improvements - small and mid-level projects.
3. Equipment needs (vehicles, tools, food service, etc.).
4. Future larger capital projects - Case for support being developed. Will have draft by end of week!

**Missionary Support update** - As of today our staff team has raised over \$24,000 in personal missionary support. This will help provide some relief to the operations budget regarding staff salaries and benefits.

**Guest Groups** - Our Fall Guest Group ministry and revenues are very uncertain at this point. Several large groups (like college groups) have been forced to cancel or postpone into 2021. We are still picking up some smaller groups and getting inquiries—so we are hopeful we will have a solid fall season. Please pray for this.

**Creative Fall Programming** - We are investigating doing some additional creative "programming" to enhance the fall. This could be additional:

1. Youth Programming - For both individual campers and smaller groups.
2. Family Camps on the weekends.
3. Mid Week events like a renewed "Prime Time" or 55+ retreat.
4. Rationale: Individual families and smaller groups are having an easier time making a "go" or "no go" decision.

**Volunteers** - We can always use volunteers for projects around camp. We have been very blessed to have over 40 volunteers already in the past couple of months. They have helped with the Hickory remodel project, deep cleaning, landscaping and other projects around camp! Come on up!!!

**Fall Retreats!** We need your help! Does your church already attend Miracle Camp? Retreats? Leadership events? Family events? Please consider promoting and using Miracle Camp!! (If you don't already!?)

FEC Pastors' Retreats - Miracle Camp is expanding its Pastors' personal retreats and events. We want to treat

you to a personal getaway or encourage you to attend one of our upcoming events. Please keep an eye out for emails, social media, direct mail and posts on our websites. We look forward to seeing you soon.

**PPP Funding** - We were very thankful to have received funding through the Paycheck Protection Program. The 24 week forgiveness plan will most likely be the most beneficial to camp.

**Thank You!** - We'd like to extend a huge thank you to our many families, donors and churches that have continued to support Miracle Camp and Retreat Center with your attendance, prayers, and finances!

**Prayer Needs!** There is much uncertainty on how the rest of our year is going to play out. Please continue to pray for camp! Pray for wisdom for our Board, myself, and our staff leadership team!

# LIFECHANGE CAMP REPORT

Since March, we have all been experiencing changes and adjustments like none we have ever known before. Here we have truly been going through some life changes. Just prior to the onset of the COVID 19 scare, Kristine Detweiler, our kitchen/office manager departed to go travel with the African Children's Choir, leaving Carol and I as the only staff here, along with a very part-time maintenance man.

Then the pandemic hit and retreat and summer camp groups began cancelling their events. March and April became empty months of questions and uncertainty. We debated over and over again regarding summer camp and how it might look. We were pleased to have three (3) retired couples with their RVs arrive in May to help us with care of the campgrounds. Also in May our Board met and it was decided definitively that camp would go on in an abbreviated form June 1 – 19 with our Family Camp, 1 week of Children's Camp and 1 week of J. H. camp fully staffed as usual. AND WHAT GREAT WEEKS THEY WERE! Full, fun and fruitful. Many campers accepted Jesus as Savior while many others were prayed with regarding other issues at work in their lives. It seemed as if new doors of opportunity were opened to us because so many other camps around were closed so we were sought out by families who would normally send their kids elsewhere. Not only was the ministry of this summer exceptional, the future looks brighter as well because of new families touched.

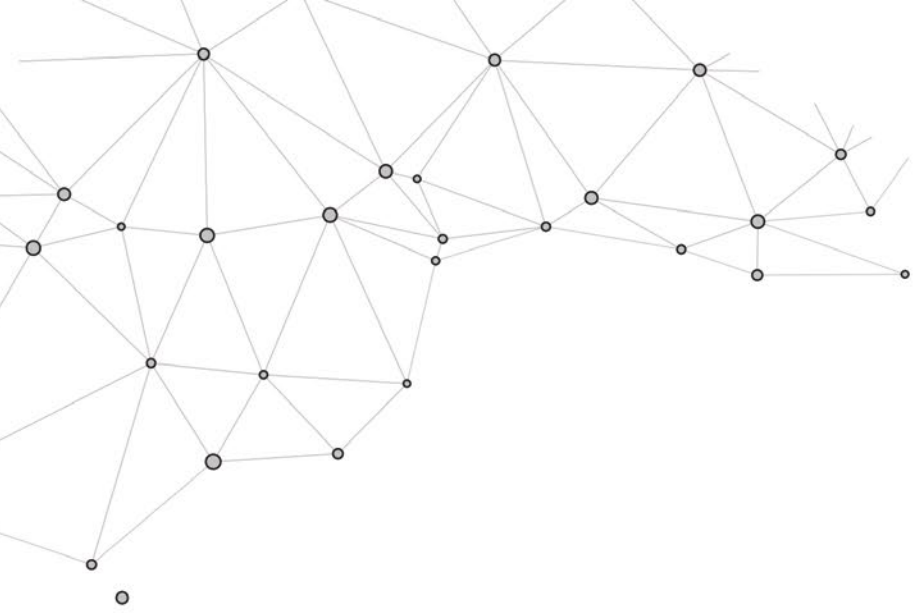
Was revenue lost because of the cancellations? Yes. However, through the grace of God we have not missed a single payment of any kind nor are we in any financial danger. In fact, just the opposite is true. It looks as though we will be able to pay off our debt this fall as a result of careful spending and the Lord's gracious provision.

August and beyond looks very promising with retreat groups continuing with their plans to do their events here. Carol and I continue to do well and anticipate new possibilities for LifeChange as a "new normal" sets in. Thank you to all of FEC for your faithful support of LifeChange Camp. We remain open and operating with full confidence that the Lord never abdicated His position of authority nor was caught off guard by the impacts of COVID 19. Indeed Psalm 19 is true which states, "The heavens are telling of the Glory of God and their expanse is declaring the works of His hand." To God be all the glory.

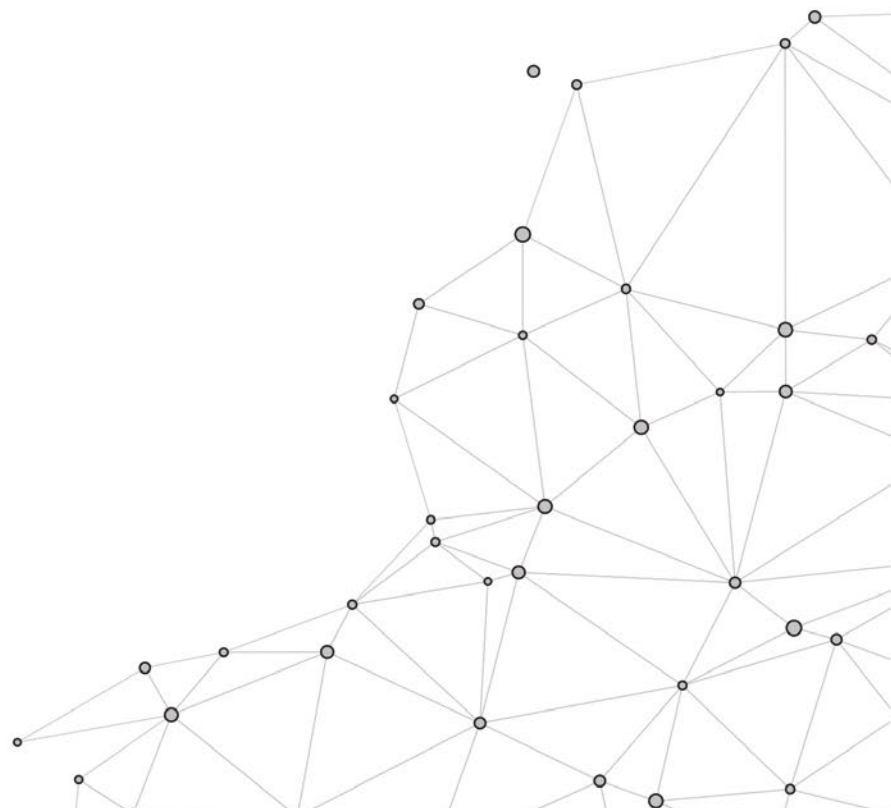
# LIFECCHANGE CAMP BUDGET

LIFECCHANGE BUDGET 2020	
Revenue (Anticipated)	
General Donations	\$115,117
User's Fees	\$152,096
Anderson Support	\$1,800
Staff Support	\$2,400
<b>TOTAL</b>	<b>\$271,412</b>
Loan Payments	
Principle	\$30,000
Interest	\$2,500
<b>TOTAL</b>	<b>\$32,500</b>
Utilities	
Electric	\$16,500
Telephone / Internet	\$6,000
Water	\$4,000
Gas	\$2,500
Trash	\$525
<b>TOTAL</b>	<b>\$29,525</b>
Memberships / Conf	\$3,000
Insurance	
Auto	\$1,400
Liability	\$14,000
Life	\$1,010
<b>TOTAL</b>	<b>\$16,410</b>
Office	
Payroll Taxes / Expenses	\$2,300
Postage	\$1,000
PR / Advertising	\$3,000
Supplies / Equipment	\$2,500
Admin Costs	\$2,000
Printing	\$500
Staff Development	\$0
Legal Fees	\$0
<b>TOTAL</b>	<b>\$11,300</b>
Travel	
Gas / Oil / Etc.	\$4,000
Motels / Meals	\$1,500
<b>TOTAL</b>	<b>\$5,500</b>

Maintenance Buildings & Grounds	
Services	\$8,500
Equipment	\$6,000
Supplies	\$7,000
Vehicle Maintenance	\$1,500
<b>TOTAL</b>	<b>\$23,000</b>
Operations	
Supplies	\$10,000
Food	\$22,000
Equipment	\$1,000
Speakers / Events	\$4,000
Cooks	\$3,000
<b>TOTAL</b>	<b>\$40,000</b>
Development	\$50,000
Vehicle Replacement	
Pass-through	
Andersons	\$1,800
Detweiler	
<b>TOTAL</b>	<b>\$1,800</b>
Tithe	\$27,000
Staff Expense	
Anderson, Bill	\$30,072
Anderson, Carol	\$21,180
Kitchen Staff	\$10,000
New Director	\$30,000
Summer Staff	\$5,500
Other Staff / Labor	\$4,000
Health Insurance	\$5,000
Medical Savings	\$1,800
Staff Retirement	\$5,000
<b>TOTAL STAFF EXPENSE</b>	<b>\$112,552</b>
<b>TOTAL BUDGET</b>	<b>\$356,587</b>



# FEC UPDATES



# FEC BOARD OF ELDERS REPORT JUNE 2020

The FEC Board of Elders exists to serve the local churches of the FEC. It is our practice to meet together twice yearly (November and May) in Fort Wayne and monthly through Zoom Conferencing. Our responsibilities primarily center on: 1) praying for FEC churches and ministries, their leaders, and members, 2) interviewing and granting credentials for new pastors and ministry leaders, 3) coming alongside churches and leaders who are in need of support in seasons of struggle, and 4) interpreting and advancing the FEC Manual of Faith and Practice.

In the last year, the Board, comprised of Bruce Rocke, Neal Hauser, Randy Evers, Rocky Rocholl, Dave Reimer, and Mark Biehl, has invested time in the following areas:

- 1. Interpreting and Applying the Role of Men and Women in our Churches** – We are a diverse group of churches (and we like that!). Yet our diversity understandably can provide challenges to our unity, especially as we work to apply the doctrines and practices as outlined in the FEC Manual of Faith and Practice which binds us. In keeping with the FEC’s complementarian position on the role of men and women serving in church leadership, the FEC elders have created a document that is intended to safeguard us from drifting outside of our doctrinal position on the complementarian role of men and women in the church. It defines how men and women are licensed for ministry in the FEC, calls for more uniformity in how we apply “titles” to ministry leaders, and recognizes the range of gifting in teaching and shepherding among men and women, while preserving the regular pulpit teaching and preaching for men.
- 2. Premillennialism** – the FEC has historically held a premillennial view on the return of Christ. Because premillennialism has often been bound tightly to biblical inerrancy, any proposed change to our Articles of Faith is only considered after great care. Not all pastors we receive for credentialing hold to an exclusive premillennial view. Thus, we have opened a discussion on amending Article VI (The Final Things) to include the following statement: In the spirit of unity and charity, we allow for amillennial (realized millennium) and post-millennial eschatological beliefs.
- 3. Credentialing pastors and ministry personnel** – this year, we have interviewed and granted ministry and service credentials to the following 31 candidates.

## Service License

Joshua Rivera

## Ministry License

Kyle George  
Trevor Maggart  
Megan White  
Jessica Leach  
David Johnson  
Yul Martin  
Blake Cooper  
Stephen Sarine  
Kurt Smith  
Brandon Emerson  
Justin Deuel  
Josh Jeffrey  
Paige Clingenpeel  
Michael Rivera

## Pastor’s License

Chase Hill  
Bryton Albright  
John Holderby  
Tyler Amburgy  
John Mutandwa  
Robert Witzig  
Erik Johnson  
Jerry Bush  
Jason Damkoehler  
Antony Cioffi

## Ordination

Eric Coblentz  
Dan Mays  
Brandon Risch  
Nathanael Schumacher  
Timothy Stauffer  
Samuel Andres

In this season of uncertainty and confusion, it can be tempting to become fearful or to lose our hope ... if our comfort and confidence are not founded on the impregnable goodness of God. A. W. Tozer reminds us, “God’s love disposes Him to desire our everlasting welfare and His sovereignty enables Him to secure it.”

How does one remain confident of God’s goodness when we are sitting 6 ft. apart, when our nation is fracturing under the weight of racial injustice, when there is open endorsement of a growing list of personal and societal sins, false teaching, and theological heresies? By recalling that our confidence is not founded on God bowing to our definitions and delivering on our expectations of “good.” Our confidence is in God being good – perfectly (not partially), infinitely, immutably, and eternally good. All that He has spoken into being is good (Gen 1:31). His goodness endures to all generations (Ps 100:5).

God’s goodness lies as the foundation of our faith, the basis for sound thinking about God. We may not immediately recognize it (Gen 50:20). It may come in ways that confuse us (Hab 1:13). But even in seasons of uncertainty, we can always remain certain of our God. He is sovereign. He is at work. And He is good!

Respectfully submitted,

**Mark Biehl**  
**Randy Evers**  
**Neal Hauser**  
**Dave Reimer**  
**Bruce Roche**  
**Rocky Rocholl**



# ENGAGE CONFERENCE 2019

## BUSINESS SESSIONS MINUTES

### SESSION #1- 7/26/19, 4:30PM

**4:30** - Nate Hamblin called the meeting to order, commenced the delegate roll call- 135 delegates were seated. Nate H. prayed to open the session. He directed our attention to the conference notebook containing the minutes from last year's conference, as well the directors' reports.

**MOTION: to approve the minutes from Conference 2018. Moved by Roger Andrews. Seconded by Caleb Barrows. Motion carried.**

**MOTION: to approve the directors reports. Moved by Jesse Kahler. Seconded by Steve Shaffer. Motion carried.**

Nate H. directed us to the section of the notebook for the three churches who are being put forward to join FEC as fully participating churches.

**MOTION: to receive River City, Flanagan and Journey Church as fully participating FEC churches. Moved by Michael Goble. Seconded by Scott Wagoner. Motion carried.**

Nate Zimmerman directed our attention to p.71 of the conference notebook to highlight a couple of noteworthy things from 2018-19, in regard to our budget and expenditures. Nate detailed the church planter assessments, leadership development, church residency programs, conference attendance and the certificate of theology. We are so thankful for the leaders being developed within FEC. Due to our rapid growth, we have added additional staff to serve our churches, which of course, impacts our budget. God has supplied the needs, and has been faithful through the giving of our churches.

Nate Z. directed our attention to the proposed 2020 budget. Nate explained the process for getting to the budget proposal and the totals for various parts of the budget, in particular the line items which reflect a change from last year. Nate H. offered an opportunity to ask any questions about the proposed budget. There were no questions.

The other action item for tomorrow is a proposed change to the constitution. The general board is suggesting that the nominating committee functions would be assigned to the general board, instead of including people who are not on the board.

**MOTION: to dispense with paper ballots for the general, international and elder board nominations. Moved by Gene Pankratz. Seconded by Scott Andrews. Motion carried.**

**MOTION: to elect Darla Rupp, Dave Walters and Abby Hyde to the General board. Moved by Bill Anderson. Seconded by Dan Henderson. Motion carried.**

**MOTION: to elect Randy Evers and Bruce Rocke to the Elder board. Moved by Steve Nelson. Seconded by Tim Bertsche. Motion carried.**

**MOTION: to elect Tim Bertsche to the International board. Moved by Wayne Baker. Seconded by Stuart Rex. Motion carried.**

**MOTION: to re-elect Rocky Rocholl to another four year term as FEC president. Moved by Matt Boyers. Seconded by Scott Wildenberg. Motion carried.**

We spent the last several minutes of our business session praying in thanksgiving for all of God's blessings in our midst

and all of His working in and through our churches, pastors and people. We gave thanks for bringing Rocky & Sue to us and for Rocky's faithful, godly leadership to our body.

Nate brought our session to a close.

#### **SESSION #2- 7/27/19, 11:00AM**

**11:00** - Nate Hamblin called our meeting to order. Nate opened the floor for questions on the proposed budget. There were no questions.

**MOTION: to accept the 2020 budget as proposed. Moved by Gene Pankratz. Seconded by Ed Wright. Motion carried.**

Nate H. addressed the proposed change to the nominating committee, and explained the reasoning behind the proposed change.

Proposed Change to Constitution:

*The General Board of FEC recommends an amendment to Part IV Articles of Organization - Article 1 - Conference of Churches - Section H - Committees - Paragraph 1. This paragraph deals solely with the makeup of the nominating committee.*

#### **Currently, this paragraph reads:**

"The Nominating Committee shall consist of seven members. The Secretary of the General Board shall serve as Chair of the committee. The General Board shall appoint two members of the Board to serve on the committee. The remaining four members shall be elected by the Delegate Body; terms shall be for two years. Elections shall be staggered to ensure continuity with no more than one member from any one church."

#### **The General Board proposes the paragraph be amended to read:**

"The Nominating Committee shall consist of the General Board."

**MOTION: to accept the change to the constitution in regard to the nominating committee, as presented above. Moved by Wayne Baker. Seconded by Michael Sprunger. The vote was made via the paper ballot. Motion carried, with 87 affirmative votes and 1 negative vote.**

FEC President Rocky Rocholl addressed the delegate body. He thanked the delegates for being part of Conference 2019, Engage. He thanked the Northwoods team for their hospitality, the FEC Resource Center staff, and the exhibitors for all of their efforts.

Rocky challenged us to take what we have heard here this weekend and put it into practice. These truths need to become a part of our DNA- to reach our Jerusalem, our Judea, our Samaria and to the ends of the earth with the Truth of the Gospel of Jesus Christ. We must have the right relationship with the Lord in order to care for and reach those around us. As a fellowship, we need to continue to change and grow and be willing to do whatever is necessary in order to reach our rapidly changing world. This is true both nationally and internationally. In light of the changes to our fundraising model, we are grateful for our churches, the initiatives, the funding of those initiatives and all of the work that has been going on for the cause and kingdom of Christ.

FEC continues to spread out across the US, far beyond the Midwest. With churches in places like Colorado, Idaho, Maine and Pennsylvania, our desire is that one day there would be a cluster of churches in all of these places for fellowship and for support. In many of our churches, our "Samaritans" are coming to us as our communities change. We must keep meeting that challenge and opportunity.

We need to continue to consider and address the educational challenges we face as many men join us in ministry and church planting. This is happening with our Certificate of Theology program and the Northwoods School of Theology. We continue to be concerned for the soul care aspect of our leaders, with Pure Desire, with Re-Gen and also by having Denny Howard here to help us address care for our pastors and their wives.

We are also concerned with facilitating church multiplication centers and networks in order to guide and direct the growing number of church plants which are rising up in our fellowship. A number of our churches are committing themselves to planting multiple churches in the future. We need to be ready to support those efforts.

We need to address a sustainable funding model for our Resource Center and the main office- working with our churches, in order to gather resources so that the growth and development of our fellowship can continue. The CSF and the FEC Legacy Fund (for endowments) are primed and ready to help our churches and people to walk through the possibilities for supporting the work of the FEC.

Rocky shared with us that he believes that the best days of the FEC are in front of us and he challenged us to continue to rely upon the strength and grace and wisdom of Jesus Christ.

Nate Hamblin directed us to a time of prayer- for our churches, pastors, missionaries and our fellowship as a whole. He read several verses from James 1 and challenged us to remember that, as we forge ahead, there will be difficulty. However, the promise of God is that He gives us wisdom generously so that we might persevere with joy. May we ask for His wisdom in faith- doubting nothing. We will prevail- not because of our abilities, but because of the generous grace of our God and His sovereign building of His church. We spent a few moments praying for Rocky, Sue, and our leaders. Mark Biehl closed us in prayer.

**11:42** - meeting adjourned.

Respectfully submitted,

**Michael R. Booker**

General Board, Vice Chairman

# NATIONAL CHURCH MULTIPLICATION UPDATE

## **WHO WOULD HAVE THOUGHT?**

Most of us have run out of descriptions for the current “state” in which we find ourselves. We’ve grown tired of hearing words like “unprecedented” and “new normal.” That said, there is little doubt that COVID-19 has turned our church-world upside down when it comes to methods.

We have attempted over the past years to emphasize to our church planters that their focus must be on people reaching people with the message of redemption through Jesus. We have equally emphasized that planting is not really about buildings, budgets and big events. And the good news, even amidst COVID, is that God’s powerful love continues to reach people who are lost, hopeless and trying to make sense of a world which seemingly is spinning out of their control.

Specifically, for church planting, we are encouraging a threefold focus as each one attempts to bring the gospel to their community (and beyond):

First, a focus on launching groups. Like never before small groups are serving the vital role of bringing people together. As isolation takes its toll, people are reminded how much we need to be with others! So, launching churches by connecting people in small groups is front and center in the plan for our planters.

Second, a focus on launching on-line. While most established churches have been working diligently to re-engineer their weekly gatherings from in-person to online, planters are faced with the opportunity to begin this way. A virtual launch for a new church is not just cost effective, but COVID has now broken down the barriers once faced for hosting church online. People of all ages are now tuned in through their phones, tablets and computers on a daily and weekly basis. Church plants have begun gathering people and giving the message of the gospel without having to find a place to rent. Basically, the field has been leveled – the smallest churches can now bring an online presence (with planning and preparation of course) that can be indistinguishable from the largest churches. A side benefit of launching online is the ability to gather a “congregation” together without the limitations of distance or location.

Finally, there will remain a focus on launching in-person. Though there is certainly a larger unknown to how in-person gatherings will eventually take place, our FEC church planters are coached through the process of an in-person “launch”. The in-person launch has always been a feature of planting churches and will continue to be a priority on into the future. Now we need to coach

and work with planters to prepare them for in-person gatherings in a way we’ve never had to before.

In the following paragraphs we describe the ongoing work of our five most recent FEC church planting efforts:

## **UPCOMING CHURCH PLANTS**

### **CALEB BARROWS**

#### ***Lyons, Kansas***

#### ***Synergy Kansas Network***

By the fall of 2019 and the start of 2020, Caleb Barrows landed in Kansas after completing the church planting assessment process. Upon moving to Kansas, he recruited a team of people to help determine the best location to plant the new church. At the conclusion of a twelve-week process, the team, known as “The T.A.P. (Target Analysis Process), Team” determined that Lyons, Kansas would be the target community. Caleb has been working ardently constructing the “DNA” of the church and has entered the “Build Phase” of the church plant recruiting his launch team to launch the church in the fall of 2020. The name of the new church in Lyons, KS is King’s Cross Church. Caleb’s goal is to the launch King’s Cross by the fall of 2020.

### **TANNER & ALEXA SMITH**

#### ***Quad Cities, IA***

#### ***Northwoods Community Church Peoria, IL***

Tanner & Alexa Smith are Northwoods Community Church’s newest church planters. Upon completing their assessment, the Smiths recruited a group of people from Northwoods to serve on their T.A.P. Team. After extensive research, exploration and engagement, the team determined Quad Cities, IA, as the target community to start the new church. The Smiths immediately bought a home, moved to the Quad Cities and celebrated the birth of their son, Dane! Tanner has been occupied completing the rigors of the “Design Phase”, while also recruiting the launch team for the new church which has been named: Pathway Church. The Smith’s goal is to launch Pathway Church in the fall of 2020.

### **NATHAN & HOLLY DEVAUX**

#### ***Southwest Fort Wayne, IN***

#### ***Crossview Community Church Grabill, IN***

Nathan & Holly DeVaux are being sent by Crossview Community Church in Grabill, IN, to plant a church in the southwest region of Fort Wayne, IN. After completing their assessment process, Nathan & Holly developed and worked with their T.A.P. Team to determine their target community. In the middle of their T.A.P. Team process the COVID-19 epidemic hit our nation. Amazingly, Nathan & Holly’s team adapted and didn’t miss a beat!

Utilizing technology and social media forums, the team successfully completed their process and designated the southwest region of Fort Wayne, IN, as the target community for the church plant. The DeVaux's are now in the process of conducting Interest Meetings, as well as one-on-one meetings, to recruit their launch team. Their goal is to launch in the fall of 2020.

## CURRENT CHURCH PLANTS

### ERIK & BREE JOHNSON

#### ***Redeemer Church, Minonk, IL***

Since launching in the fall of 2019, Erik & Bree Johnson have moved to Minonk and have embraced the challenges of leading a new church. According to Erik, "starting and leading Redeemer Church has been nothing short of a life-changing experience for me and our whole family." Planting a new church is challenging enough, but to be hit with COVID-19 just when things were taking off could have easily devastated a new church. But according to Erik, "the pandemic has been a reminder that the church is not a building, but a body. It has been amazing to see how the challenges of COVID-19 have strengthened the relationships and commitment of the people of Redeemer. Bree and I wouldn't want to be anywhere else."

### GREG & CARA GRIMWOOD

#### ***Southside Community Church, Wooster, OH - Synergy Ohio***

Like most church plants, Southside Community Church has experienced its share of change and challenges during the first year and a half of its existence. Yet, through it all, God is proving over and over again that he can shoot straight with a crooked stick (the Wayne County paraphrase of Romans 8:28).

COVID forced us to take our services online, which opened the door for a whole new demographic of spiritual seekers to find us. Re-gathering forced us to find a bigger space, which led us to a larger, newer room in the same building we were using. COVID also forced us to livestream our services on Facebook for Southsiders who aren't ready to re-gather. This has led to several new people joining our live services, and a surprising number of people watching us online. All the while, through various transitions, our staff is growing closer relationally, and more like-minded missionally - leading to an overall sense of health. In turn, God is slowly yet steadily growing our gathering.

Finally, through our personal involvement in FEC's Synergy Ohio group, and in partnership with FEC's Synergy Church Planting network, Southside is seeking God's direction on how we might participate with him in planting new churches.

## FUTURE FOCUS

We can genuinely say that we've never been more excited and hopeful about the future of church multipli-

cation in FEC. We continue to see opportunity align with resources and vision to position us for significant new gospel outposts and planting projects to emerge in the near future.

Our next Church Planter Assessment Center (CPAC) this fall could see double-digit numbers of prospective planters participate. Recruiting is expanding into areas both within and outside FEC churches (and if you sense God stirring you to consider church planting, please let us know; we'd love to talk with you), including a presence at church planting conferences and networking alliances. We have plans to further develop and enhance our training efforts to include an in-house boot camp component and church planting leadership incubators.

As we have amplified efforts to intentionally foster interest in planting among our existing churches, we are seeing an increasing number of FEC congregations embrace the idea that it is churches that plant churches, and that every church regardless of size, age, or resources can be involved in one of our five outlets for multiplication:

**LEVEL 1: ADOPTING** - A church embraces a particular planting project outside its area and builds a relationship, prayer, and support for the project.

**LEVEL 2: SPONSORING** - A church identifies and raises up a potential church planter who is commissioned to receive training and plant in a different area.

**LEVEL 3: PARTNERING** - Two or more churches in regional proximity combine to plant a church in a nearby area.

**LEVEL 4: BIRTHING** - A church raises up or brings in a planter to hive off a core team and plant a daughter or campus church in a nearby area.

**LEVEL 5: MULTIPLYING** - A church establishes a residency or training program to develop and commission new church planters and/or staff pastors.

Our hope, prayer, and plan is to see FEC expand into areas where we have not yet had a presence across the country. We are asking God to use us to raise up our first Latino church plant, more multi-ethnic plants in cosmopolitan areas, and new works in areas such as the Pacific Northwest, West Coast, Mountain West, Plains states, Southeast, and of course continuing projects in the Midwest.

FEC's reputation and connections in the church planting world are growing, and we envision expanded opportunities for partnerships and recruiting to see resources and structure meet up with passion and vision, resulting in exciting new opportunities for kingdom growth that delivers the gospel to this generation. We sincerely believe FEC's best and most eternity-impacting church planting days are still ahead of us.

Respectfully Submitted,

**Tom Bennardo**  
**Jay Nickless**  
**Scott Wagoner**

# INTERNATIONAL CHURCH MULTIPLICATION UPDATE

Igniting movements of reproducing communities of Christ followers in cross-cultural settings undergirds the International Church Multiplication ministry of the Fellowship of Evangelical Churches. God is using FEC Churches in unified partnership to accomplish this defining purpose through multiple cross-cultural initiatives. Passionate prayer, relational engagement, gospel proclamation and a variety of strategies characterize the God-glorifying result of indigenous, reproducing and self-sustaining churches in the geographical locations God has opened to FEC. As all are well aware, this past year has included monumental physical, logistical, economic and other extraordinary challenges everywhere in the world due to the coronavirus and its far-reaching implications. None of these can or will limit the expanding Kingdom of Christ, even as in our humanness, we are stretched in new and creative ways demonstrated by several highlights from this past year.

## **BASQUE COUNTRY, SPAIN:**

With over 2 months of strict quarantine and nearly 100 days of significant restrictions, it is imaginable that nearly all opportunities for engagement would be lost. However, in the midst of the quarantine challenges, the FEC team increased their prayer efforts and looked for opportunities of creative engagement with neighbors and friends. Significant interactions and even spiritual conversations are on the increase as the quarantine has lifted and the team is once again intentionally connecting relationally in their communities.

Teaching English, volunteering in community organizations, engaging and coaching Spanish evangelical churches, recreational activities and involvement in English immersion programs are just a few of the methods the team employs to gain relational access. The goal is always initiating relationships that move from casual, to meaningful, to spiritual conversations and we continue to pray for Basque people who will study the Bible and fall in love with Jesus. Due to the current pandemic, all summer immersion programs were canceled, and our team is now working to deepen relationships with many of those students and families in Basque country.

## **WEST AFRICA, BURKINA FASO AND THE YALUNKA:**

As Yalunka believers in Southwest Mali begin to take ownership in their own spiritual development, and the Evangelical Mennonite Church of Burkina Faso (EMC-BF) takes the lead in reaching and training the Yalunka of Southwest Mali, FEC made a significant transition during this past year. FEC's commitment to reaching the Yalunka

people still stands firm. However, the role has changed from having the lead role to an established partnership of encouraging, praying, and resourcing the ongoing ministry God is doing among the Yalunka.

FEC joined the International Partnership Council of the EMC-BF. This partnership is committed to establishing reproducing churches among five people groups in Burkina Faso through strengthening the existing churches, developing leaders and planting new churches. Reaching the Yalunka of Mali is a mission focus of the Burkina Faso church. God has raised up gifted and committed Burkinabe workers to travel to the villages of Mali evangelizing and teaching among the Yalunka people. We praise God for His divine hand in this partnership and excitedly anticipate seeing a growing and multiplying group of believers among the Yalunka.

## **SOUTHERN AFRICA:**

Growing out of a work initiated by Crossroads Evangelical Church (Wauseon, OH) the Southern Africa Church Planting Initiative (SACPI) is FEC's newest international initiative. The SACPI vision is to resource indigenous leaders to bring the gospel through planting sustainable, reproducing churches in rural villages of six countries of Southern Africa. This initiative has ramped up quickly through a Zimbabwean church planting director, John Mutandwa, and a partnership with the Evangelical Church of Zimbabwe and leader Bishop Isaac Soda. God is raising up multiple gifted and trained indigenous planters as well as needed resources. Multiple FEC churches are collaborating in this church planting initiative. Although recently slowed due to the coronavirus pandemic, since August 2019 SACPI initiated six church plants in three countries (Zimbabwe, Mozambique, and Botswana) with plans for more in the coming months. All glory to God as He transforms lives through the gospel and power of the Holy Spirit in rural communities in Southern Africa!

## **VISAKHAPATNAM, INDIA:**

During this past year Pastor Syam and Esther Babu of Zion Evangelistic and Care Ministries (ZEC), along with their ZEC staff and volunteers, expanded the regular involvements in children's and youth ministry, evangelistic crusades, pastor training, and care ministries to the poor, HIV positive and others in great need.

Through a growing partnership with the Surge Project, a global church planting effort, ZEC is accomplishing the vision to plant churches in hundreds of Hindu villages

throughout the region. Scores of planters have been trained, resourced and sent out to establish churches in towns and villages without a gospel witness with many more planters in the training pipeline.

**FISHERS, INDIANA:**

The Fishers Arabic Church on the north side of Indianapolis, IN, joined FEC as a church multiplication initiative during the fall of 2019. These Christ followers from Egypt and the Middle East are committed to reaching the growing Arabic community in their area. Characterized by a passion for prayer, intentional relational engagement, solid Biblical teaching and worship, we are so grateful God has joined us together in partnership for the gospel.

**DOMINICAN REPUBLIC:**

FEC continues to share in partnership with the Evangelical Mennonite Church of the Dominican Republic that God used FEC to establish decades ago. With the growth of the national church conference and its mature leaders and churches, one exciting involvement is FEC providing construction loans for Dominican church buildings. During this past year, two previous church loans were paid off and new loans have been given to two additional rural churches. Each of these churches needed to add additional space because of local church growth and approval to begin a child sponsorship program through Compassion International.

In March 2021, we anticipate joining the DR National Church for a great celebration highlighting the 75th anniversary of the 1946 arrival of FEC's first missionaries to launch a church planting initiative in the completely unreached southwestern region of the Dominican Republic.

**FEC GLOBAL MINISTRY PERSONNEL:**

FEC has a huge worldwide footprint! Collectively FEC churches have sent over one hundred missionaries to scores of countries on five continents.

The rich history of FEC's obedience to the Great Commission continues! In cross-cultural settings where gospel witness is minimal, through indigenous leaders and in kingdom building partnerships throughout the world, it is an ongoing privilege to serve the Lord together!

**Hal Lehman**

Director of Cross-Cultural Church Multiplication

# FINANCE REPORT

## 2019 BALANCE SHEET

	DEC 31, 19	DEC 31, 18	\$ CHANGE		DEC 31, 19	DEC 31, 18	\$ CHANGE
<b>ASSETS</b>				<b>101600 - CHASE BANK</b>			
<b>Current Assets</b>				<b>101601 - Chase Restored Church</b>			
<b>Checking/Savings</b>				<b>TOTAL 101600 - CHASE BANK</b>			
<b>100010 - BANK ACCOUNTS</b>				<b>101700 - SIGNATURE BANK</b>			
<b>101000 - FEC General Checking Accounts</b>				<b>101701 - Living Grace Even Checking</b>			
<b>101100 - Star Financial Bank</b>				<b>TOTAL 101700 - SIGNATURE BANK</b>			
101101 - FEC Operating Checking	94,058.30	84,335.63	9,722.67	TOTAL 101000 - FEC General Checking Accounts	979,616.21	1,049,947.14	(70,330.93)
101102 - IM Medical Checking	39,738.94	55,553.74	(15,814.80)	<b>TOTAL 100010 - BANK ACCOUNTS</b>	<b>979,616.21</b>	<b>1,049,947.14</b>	<b>(70,330.93)</b>
101103 - SHP Medical Checking	26,311.79	42,351.69	(16,039.90)	<b>TOTAL Checking/Savings</b>	<b>979,616.21</b>	<b>1,049,947.14</b>	<b>(70,330.93)</b>
101107 - Certificate of Theology	40,205.00	31,920.00	8,285.00				
101108 - Financial Health - NAE	0.00	42,000.00	(42,000.00)				
101110 - Initiative Undesignated	80,656.10	73,622.55	7,033.55				
101120 - Basque Initiative	190,582.27	114,185.30	76,396.97				
101121 - West Africa Initiative	146,218.17	169,554.72	(23,336.55)				
101122 - ZEC Initiative	0.00	94.93	(94.93)				
101123 - Southern Africa CP Initiative	54,827.00	0.00	54,827.00				
101130 - Synergy Ohio	53,183.11	33,438.14	19,744.97				
101131 - Synergy - Kansas	70,637.16	69,358.31	1,278.85				
101132 - River City Church (Baldwin)	0.00	8,232.94	(8,232.94)				
101133 - Southside Community (Grimwood)	20,772.30	42,699.46	(21,927.16)				
101134 - Flanagan Community (Mays)	18,575.31	34,565.26	(15,989.95)				
101135 - Neighborhood Church (Hamblin)	16,888.10	20,907.77	(4,019.67)				
101136 - Restored Church (Knight)	(540.81)	68,010.90	(68,551.71)				
101137 - Living Grace Evan (Amburgy)	8,430.00	0.00	8,430.00				
<b>TOTAL 101100 - STAR FINANCIAL BANK</b>	<b>860,542.74</b>	<b>890,831.34</b>	<b>(30,288.60)</b>				
<b>101200 - PNC Bank</b>							
101201 - PNC River City Checking	0.00	71,409.11	(71,409.11)				
101202 - PNC Southside Community	58,422.25	21,424.24	36,998.01				
<b>TOTAL 101200 - PNC BANK</b>	<b>58,422.25</b>	<b>92,833.35</b>	<b>(34,411.10)</b>				
<b>101300 - Wells Fargo Bank</b>							
101302 - WF Africa ATM	0.00	1,515.73	(1,515.73)				
101303 - WF Basque ATM	0.00	11,378.27	(11,378.27)				
<b>TOTAL 101300 - WELLS FARGO BANK</b>	<b>0.00</b>	<b>12,894.00</b>	<b>(12,894.00)</b>				
<b>101400 - OLD NATIONAL BANK</b>							
101401 - Neighborhood Church Checking	6,783.81	21,837.26	(15,053.45)				
<b>TOTAL 101400 - OLD NATIONAL BANK</b>	<b>6,783.81</b>	<b>21,837.26</b>	<b>(15,053.45)</b>				
<b>101500 - FLANAGAN STATE BANK</b>							
101501 - Flanagan Community Checking	0.00	26,408.66	(26,408.66)				
<b>TOTAL 101500 - FLANAGAN STATE BANK</b>	<b>0.00</b>	<b>26,408.66</b>	<b>(26,408.66)</b>				



# FINANCE REPORT

## 2019 BALANCE SHEET CONTINUED

DEC 31, 19    DEC 31, 18    \$ CHANGE

DEC 31, 19    DEC 31, 18    \$ CHANGE

Accounts Receivable			
1200 - Accounts Receivable			
1250 - Macaracuy VZ Appt Sale	0.00	7,200.00	(7,200.00)
<b>TOTAL 1200 - Accounts Receivable</b>	<b>0.00</b>	<b>7,200.00</b>	<b>(7,200.00)</b>
<b>TOTAL Accounts Receivable</b>	<b>0.00</b>	<b>7,200.00</b>	<b>(7,200.00)</b>
Other Current Assets			
102000 - FEC Investment Accounts			
102100 - FEC Designated Funds			
102101 - 1379 - FEC Operating Reserve	103,205.13	101,736.02	1,469.11
102102 - 1454 - FEC Demand Account	33,340.43	0.00	33,340.43
102103 - 1453 - CSF 12 Month 5/21/20	28,952.19	0.00	28,952.19
102104 - 1452 - CSF 24 Month 5/21/21	28,988.00	0.00	28,988.00
102105 - 1451 - CSF 36 Month 5/21/22	29,707.69	0.00	29,707.69
<b>TOTAL 102100 - FEC DESIGNATED FUNDS</b>	<b>224,193.44</b>	<b>101,736.02</b>	<b>122,457.42</b>
102200 - IM Designated Funds			
102201 - 1459 - IM Demand Account	5,835.23	0.00	5,835.23
102202 - 1458 - MK Scholarship Fund	8,535.47	0.00	8,535.47
102203 - 1457 - CSF 12 Month 5/21/20	65,353.99	0.00	65,353.99
102204 - 1456 - CSF 24 Month 5/21/21	65,434.24	0.00	65,434.24
102205 - 1455 - CSF 36 Month 5/21/22	65,483.24	0.00	65,483.24
<b>TOTAL 102200 - IM DESIGNATED FUNDS</b>	<b>210,642.69</b>	<b>0.00</b>	<b>210,642.69</b>
102300 - CP Designated Funds			
102301 - 1460 - CP Demand Account	7,382.03	0.00	7,382.03
102302 - 1461 - CP Equipment Fund	4,462.36	0.00	4,462.36
102303 - 1462 - CP Designated Funds	17,508.39	0.00	17,508.39
<b>TOTAL 102300 - CP DESIGNATED FUNDS</b>	<b>29,352.78</b>	<b>0.00</b>	<b>29,352.78</b>
102400 - FEC MEDICAL RESERVE			
102401 - 1381 - IM Medical Reserve	101,465.99	100,021.62	1,444.37
102402 - 1382 - SHP Medical Reserve	28,662.48	28,254.48	408.00
<b>TOTAL 102400 - FEC MEDICAL RESERVE</b>	<b>103,128.47</b>	<b>128,276.10</b>	<b>1,852.37</b>
102600 - FEC CAPITAL RESERVE			
102601 - 1380 - Capital Improvements	14,501.77	22,703.61	(8,201.84)
101501 - 1441 - Building Projects	7,779.51	22,596.00	(14,816.49)
<b>TOTAL 102600 - FEC CAPITAL RESERVE</b>	<b>22,281.28</b>	<b>45,299.61</b>	<b>(23,018.33)</b>
102700 - 1463 - NAE Financial Health	67,375.13	0.00	67,375.13
102998 - Estate Funds - CSF	0.00	217,139.16	(217,139.16)
102999 - Restricted Funds - CSF	0.00	259,485.91	(259,485.91)
<b>TOTAL 102000 - FEC INVESTMENT ACCOUNTS</b>	<b>683,973.79</b>	<b>751,936.80</b>	<b>(67,963.01)</b>
12000 - *Undeposited Funds	28,654.77	0.00	28,654.77
13100 - Prepaid MASP Reserve	105,836.67	92,642.67	13,194.00
<b>TOTAL Other Current Assets</b>	<b>818,465.23</b>	<b>844,579.47</b>	<b>(26,114.24)</b>
<b>TOTAL Current Assets</b>	<b>1,798,081.44</b>	<b>1,901,726.61</b>	<b>(103,645.17)</b>

Fixed Assets			
109000 - Building and Equipment			
190100 - Admin RC - Land	80,527.00	80,527.00	0.00
190150 - Admin RC - Land Improvement	51,768.80	46,547.80	5,221.00
190200 - Admin RC - Building	864,162.00	864,162.00	0.00
190400 - Admin RC - Furnishings & Equip	187,066.71	174,356.59	12,710.12
190600 - Construction In-Progress	6,148.93	0.26	6,148.67
190650 - Building Improve - Lower Level	20,551.94	0.00	20,551.94
190850 - 2017 Toyota Sienna	16,980.37	0.00	16,980.37
190900 - Depreciation	(133,100.59)	(89,398.59)	(43,702.00)
<b>TOTAL 109000 - Building and Equipment</b>	<b>1,094,105.16</b>	<b>1,076,195.06</b>	<b>17,910.10</b>
<b>TOTAL Fixed Assets</b>	<b>1,094,105.16</b>	<b>1,076,195.06</b>	<b>17,910.10</b>
Other Assets			
191000 - Loans Receivable			
191300 - FEC Loan - Spain Properties	70,419.87	0.00	70,419.87
191400 - FEC Loan - Las Lagunas	9,507.50	0.00	9,507.50
<b>TOTAL 191000 - Loans Receivable</b>	<b>79,927.37</b>	<b>0.00</b>	<b>79,927.37</b>
<b>TOTAL Other Assets</b>	<b>79,927.37</b>	<b>0.00</b>	<b>79,927.37</b>
<b>TOTAL ASSETS</b>	<b>2,972,113.97</b>	<b>2,977,921.67</b>	<b>(5,807.70)</b>

# FINANCE REPORT

## 2019 BALANCE SHEET CONTINUED

	DEC 31, 19	DEC 31, 18	\$ CHANGE
<b>LIABILITIES &amp; EQUITY</b>			
<b>Liabilities</b>			
<b>Current Liabilities</b>			
<b>Other Current Liabilities</b>			
200040 - Accrued MASP Fund Res Liability	0.00	(8,448.00)	(8,448.00)
<b>250000 - FEC Cert of Theology (CoT)</b>			
250100 - CoT Church Portion	16,750.00	15,810.00	940.00
250200 - CoT Individual Portion	23,455.00	16,110.00	7,345.00
<b>TOTAL 250000 - FEC Cert of Theology (CoT)</b>	<b>40,205.00</b>	<b>31,920.00</b>	<b>8,285.00</b>
<b>TOTAL Other Current Liabilities</b>	<b>40,205.00</b>	<b>23,472.00</b>	<b>16,733.00</b>
<b>TOTAL Current Liabilities</b>	<b>40,205.00</b>	<b>23,472.00</b>	<b>16,733.00</b>
<b>Long Term Liabilities</b>			
<b>290000 - Long Term Liabilities</b>			
290100 - CSF Loan - Office Building	779,748.19	800,000.00	(20,251.81)
290200 - CSF Loan - 17 Toyota Sienna	15,152.01	0.00	15,152.01
<b>TOTAL 290000 - Long Term Liabilities</b>	<b>749,900.20</b>	<b>800,000.00</b>	<b>(5,099.80)</b>
<b>TOTAL Long Term Liabilities</b>	<b>749,900.20</b>	<b>800,000.00</b>	<b>(5,099.80)</b>
<b>TOTAL Liabilities</b>	<b>835,105.20</b>	<b>823,472.00</b>	<b>11,633.20</b>
<b>Equity</b>			
<b>300000 - Opening Bal Equity</b>			
310100 - Unrestr-Bd Designated (Acc Res)	100,750.83	100,750.83	0.00
310200 - Unrestr-Bd Designated (IM)	259,613.62	259,613.62	0.00
310300 - Unrestr-Bd Designated (Health)	127,034.57	127,034.57	0.00
310400 - Unrestr-Bd Designated (Prop Inv)	267,593.40	267,593.40	0.00
320100 - Temp Restr - IM	306,991.75	306,991.75	0.00
320200 - Temp Restr - Church Planting	274,986.75	274,986.75	0.00
320300 - Temp Restr - Staffing	180,647.25	180,647.25	0.00
320900 - Temp Restr - Net Assets - Nonbudg	141,332.27	115,055.27	26,277.00
330100 - Perm Restr-Scholarship Fund	4,500.00	4,500.00	0.00
<b>TOTAL 300000 - Opening Bal Equity</b>	<b>1,663,450.44</b>	<b>1,637,173.44</b>	<b>26,277.00</b>
32000 - Unrestricted Net Assets	479,046.23	415,447.76	63,598.47
Net Income	(5,487.90)	101,828.47	(107,316.37)
<b>TOTAL Equity</b>	<b>2,137,008.77</b>	<b>2,154,449.67</b>	<b>(17,440.90)</b>
<b>TOTAL LIABILITIES &amp; EQUITY</b>	<b>2,972,113.98</b>	<b>2,977,921.67</b>	<b>(5,807.70)</b>

# FINANCE REPORT

## 2019 OFFICE BUDGET

JAN - DEC 19    YTD BUDGET    % OF BUDGET    ANNUAL BUDGET

ORDINARY INCOME/EXPENSE				
<b>Income</b>				
<b>400000 - FEC Office Revenue</b>				
410000 - FEC Ministries	1,201,397.55	1,096,000.00	109.62%	1,096,000.00
450000 - Shared Faith & Close the Gap	18,974.00			
460000 - Other Income	51,126.20	35,000.00	146.08%	35,000.00
<b>Total 400000 - FEC Office Revenue</b>	<b>1,271,497.75</b>	<b>1,131,000.00</b>	<b>112.42%</b>	<b>1,131,000.00</b>
<b>700000 - Initiative &amp; Other Revenue</b>				
<b>720000 - FEC Sponsored Events</b>				
720100 - Conference	36,298.01	35,000.00	103.71%	35,000.00
<b>Total 720000 - FEC Sponsored Events</b>	<b>36,298.01</b>	<b>35,000.00</b>	<b>103.71%</b>	<b>35,000.00</b>
780000 - Other NB Funds	4,289.68			
<b>Total 700000 - Initiative &amp; Other</b>	<b>40,587.69</b>	<b>35,000.00</b>	<b>115.97%</b>	<b>35,000.00</b>
<b>Total Income</b>	<b>1,312,085.44</b>	<b>1,166,000.00</b>	<b>112.53%</b>	<b>1,166,000.00</b>
<b>GROSS PROFIT</b>	<b>1,312,085.44</b>	<b>1,166,000.00</b>	<b>112.53%</b>	<b>1,166,000.00</b>
<b>Expense</b>				
<b>830000 - FEC Office Budget</b>				
<b>830100 - Operations</b>				
830110 - Audit Review	9,800.00	5,400.00	181.48%	5,400.00
830115 - Comm & Publications	37,212.45	40,000.00	93.03%	40,000.00
830120 - Inter-group Relations	5,111.80	4,000.00	127.8%	4,000.00
830125 - Office Expenses	80,807.61	70,000.00	115.44%	70,000.00
830130 - Travel & Meetings	54,954.82	55,000.00	99.92%	55,000.00
<b>Total 830100 - Operations</b>	<b>187,886.68</b>	<b>174,400.00</b>	<b>107.73%</b>	<b>174,400.00</b>
<b>830200 - Ministry</b>				
830210 - Benevolence	1,499.95	500.00	299.99%	500.00
830215 - Conference	60,220.92	50,000.00	120.44%	50,000.00
830220 - Education	23,315.00	35,000.00	66.61%	35,000.00
830225 - Church Multiplication	10,225.11	10,000.00	102.25%	10,000.00
830230 - Ministry Res & Internship	38,600.00	40,000.00	96.5%	40,000.00
830235 - Leadership Dev & Coaching	30,847.09	30,000.00	102.82%	30,000.00
830240 - LifeChange Camp	15,000.00	15,000.00	100.00%	15,000.00
830245 - Miracle Camp & Retreat Cnt	30,000.00	30,000.00	100.00%	30,000.00
830250 - Quizzing	12,863.41	13,000.00	98.95%	13,000.00
830255 - Retirement Savings Plan	109,886.72	85,000.00	129.28%	85,000.00
830260 - Salem Ranch	15,000.00	15,000.00	100.00%	15,000.00
<b>TOTAL 830200 - Ministry</b>	<b>347,458.21</b>	<b>323,500.00</b>	<b>107.41%</b>	<b>323,500.00</b>
<b>830300 - Personnel</b>				
830310 - Personnel	739,302.88	772,500.00	95.7%	772,500.00
<b>TOTAL 830300 - Personnel</b>	<b>739,302.88</b>	<b>772,500.00</b>	<b>95.7%</b>	<b>772,500.00</b>

JAN - DEC 19    YTD BUDGET    % OF BUDGET    ANNUAL BUDGET

<b>830500 - Debt/Mortgage</b>				
830510 - Debt/Mortgage Repayment	43,845.53	33,000.00	132.87%	33,000.00
<b>TOTAL 830500 - Debt/Mortgage</b>	<b>43,845.53</b>	<b>33,000.00</b>	<b>132.87%</b>	<b>33,000.00</b>
<b>TOTAL 830000 - FEC Office Budget</b>	<b>1,318,493.30</b>	<b>1,303,400.00</b>	<b>101.16%</b>	<b>1,303,400.00</b>
<b>TOTAL Expense</b>	<b>1,318,493.30</b>	<b>1,303,400.00</b>	<b>101.16%</b>	<b>1,303,400.00</b>
<b>Net Ordinary Income</b>	<b>(6,407.86)</b>	<b>(137,400.00)</b>	<b>4.66%</b>	<b>(137,400.00)</b>
<b>Net Income</b>	<b>(6,407.86)</b>	<b>(137,400.00)</b>	<b>4.66%</b>	<b>(137,400.00)</b>

# FINANCE REPORT

## 2020 YEAR-TO-DATE SUMMARY

	JUN 30, 20	DEC 31, 19	\$ CHANGE
<b>ASSETS</b>			
<b>Current Assets</b>			
<b>Checking/Savings</b>			
<b>100010 - BANK ACCOUNTS</b>			
<b>101000 - FEC General Checking Accounts</b>			
<b>101100 - Star Financial Bank</b>			
101101 - FEC Operating Checking	338,588.77	94,058.30	244,530.47
101102 - IM Medical Checking	43,712.77	39,738.94	3,973.83
101103 - SHP Medical Checking	46,777.75	26,311.79	20,465.96
101107 - Certificate of Theology	0.00	40,205.00	(40,205.00)
101110 - Initiative Undesignated	0.10	80,656.10	(80,656.10)
101120 - Basque Initiative	142,898.40	190,582.27	(47,683.35)
101121 - West Africa Initiative	43,703.82	146,218.17	(102,514.35)
101123 - Southern Africa CP Initiative	0.00	54,827.00	(54,827.00)
101130 - Synergy Ohio	52,953.20	53,183.11	(229.91)
101131 - Synergy - Kansas	55,752.62	70,637.16	(14,884.54)
101133 - Southside Community (Grimwood)	17,474.04	20,772.30	(3,298.26)
101134 - Flanagan Community (Mays)	0.00	18,575.31	(18,575.31)
101135 - Neighborhood Church (Hamblin)	35,507.98	16,888.10	18,619.88
101136 - Restored Church (Knight)	0.00	(540.81)	540.81
101137 - Living Grace Evan (Amburgy)	25,887.80	8,430.00	17,457.80
101138 - Pathway Church IA (Smith)	34,368.50	0.00	34,368.50
101139 - NorthEast IN (DeVaux)	17,686.34	0.00	17,686.34
101140 - King's Cross KS (Barrows)	28,282.74	0.00	28,282.74
<b>TOTAL 101100 - STAR FINANCIAL BANK</b>	<b>883,594.73</b>	<b>860,542.74</b>	<b>23,051.99</b>
<b>101200 - PNC Bank</b>			
101202 - PNC Southside Community	80,776.98	58,422.25	22,354.73
<b>TOTAL 101200 - PNC BANK</b>	<b>80,776.98</b>	<b>58,422.25</b>	<b>22,354.73</b>
<b>101400 - OLD NATIONAL BANK</b>			
101401 - Neighborhood Church Checking	5,845.10	6,783.81	(938.71)
<b>TOTAL 101400 - OLD NATIONAL BANK</b>	<b>5,845.10</b>	<b>6,783.81</b>	<b>(938.71)</b>
<b>101600 - CHASE BANK</b>			
101601 - Chase Restored Church	0.00	11,133.01	(11,133.01)
<b>TOTAL 101600 - CHASE BANK</b>	<b>0.00</b>	<b>11,133.01</b>	<b>(11,133.01)</b>
<b>101700 - SIGNATURE BANK</b>			
101701 - Living Grace Even Checking	98,299.75	42,734.40	55,565.35
<b>TOTAL 101700 - SIGNATURE BANK</b>	<b>98,299.75</b>	<b>42,734.40</b>	<b>55,565.35</b>
<b>101800 - Evangelical Christian (ECCU)</b>			
101801 - ECCU - Southern Africa CPI	61,441.22	0.00	61,441.22
<b>TOTAL 101800 - Evangelical Christian (ECCU)</b>	<b>61,441.22</b>	<b>0.00</b>	<b>61,441.22</b>

	JUN 30, 20	DEC 31, 19	\$ CHANGE
<b>TOTAL 101000 - FEC General Checking Accounts</b>	<b>1,129,957.78</b>	<b>979,616.21</b>	<b>150,341.57</b>
<b>TOTAL 100010 - BANK ACCOUNTS</b>	<b>1,129,957.78</b>	<b>979,616.21</b>	<b>150,341.57</b>
<b>TOTAL Checking/Savings</b>	<b>1,129,957.78</b>	<b>979,616.21</b>	<b>150,341.57</b>

# FINANCE REPORT

## 2020 YEAR-TO-DATE SUMMARY CONTINUED

	JUN 30, 20	DEC 31, 19	\$ CHANGE
<b>Other Current Assets</b>			
<b>102000 - FEC Investment Accounts</b>			
<b>102100 - FEC Designated Funds</b>			
102101 - 1379 - FEC Operating Reserve	103,634.28	103,205.13	429.15t
102102 - 1454 - FEC Demand Account	36,239.92	33,340.43	12,899.49
102103 - 1453 - CSF 12 Month 5/21/20	0.00	28,952.19	(28,952.19)
102104 - 1452 - CSF 24 Month 5/21/21	29,350.34	28,988.00	362.34
102105 - 1451 - CSF 36 Month 5/21/22	30,101.29	29,707.69	393.60
<b>TOTAL 102100 - FEC DESIGNATED FUNDS</b>	<b>209,352.83</b>	<b>224,193.44</b>	<b>(14,867.61)</b>
<b>102200 - IM Designated Funds</b>			
102201 - 1459 - IM Demand Account	67,579.56	5,835.23	61,744.33
102202 - 1458 - MK Scholarship Fund	8,576.22	8,535.47	40.75
102203 - 1457 - CSF 12 Month 5/21/20	0.00	65,353.99	(65,353.99)
102204 - 1456 - CSF 24 Month 5/21/21	66,252.69	65,434.24	817.93
102205 - 1455 - CSF 36 Month 5/21/22	66,350.90	65,483.24	867.66
102206 - 1503 - International Retreat	13,324.30	0.00	13,324.30
102207 - 1504 - CSF 12 Month 5/27/21	65,000.00	0.00	65,000.00
102200 - 1507 - Basque Reserve Fund	60,000.00	0.00	60,000.00
<b>TOTAL 102200 - IM DESIGNATED FUNDS</b>	<b>347,083.67</b>	<b>210,642.69</b>	<b>136,440.98</b>
<b>102300 - CP Designated Funds</b>			
102301 - 1460 - CP Demand Account	17,983.85	7,382.03	10,601.82
102302 - 1461 - CP Equipment Fund	4,483.67	4,462.36	21.31
102303 - 1462 - CP Designated Funds	17,591.99	17,508.39	83.60
<b>TOTAL 102300 - CP DESIGNATED FUNDS</b>	<b>40,059.51</b>	<b>29,352.78</b>	<b>10,706.73</b>
<b>102400 - FEC MEDICAL RESERVE</b>			
102401 - 1381 - IM Medical Reserve	101,887.91	101,465.99	421.92
102402 - 1382 - SHP Medical Reserve	28,781.69	28,662.48	119.21
<b>TOTAL 102400 - FEC MEDICAL RESERVE</b>	<b>130,669.60</b>	<b>130,128.47</b>	<b>541.13</b>
<b>102600 - FEC CAPITAL RESERVE</b>			
102601 - 1380 - Capital Improvements	2,419.37	14,501.77	(12,082.40)
101501 - 1441 - Building Projects	20,425.40	7,779.51	12,645.89
<b>TOTAL 102600 - FEC CAPITAL RESERVE</b>	<b>22,281.28</b>	<b>45,299.61</b>	<b>(23,018.33)</b>
102700 - 1463 - NAE Financial Health	67,696.85	67,375.13	321.72
102800 - 1496 - Initiative Undesignated	88,819.01	0.00	88,819.01
102900 - 1501 - CARES Act - PPP Funds	1,976.43	0.00	1,976.43
<b>TOTAL 102000 - FEC INVESTMENT ACCOUNTS</b>	<b>908,475.67</b>	<b>683,973.79</b>	<b>224,501.88</b>
12000 - *Undeposited Funds	0.00	28,654.77	(28,654.77)
13100 - Prepaid MASP Reserve	90,568.67	105,836.67	(15,268.00)
<b>TOTAL Other Current Assets</b>	<b>999,044.34</b>	<b>818,465.23</b>	<b>180,579.11</b>
<b>TOTAL Current Assets</b>	<b>2,129,002.12</b>	<b>1,798,081.44</b>	<b>330,920.68</b>

	JUN 30, 20	DEC 31, 19	\$ CHANGE
<b>Fixed Assets</b>			
<b>109000 - Building and Equipment</b>			
190100 - Admin RC - Land	80,527.00	80,527.00	0.00
190150 - Admin RC - Land Improvement	51,768.80	51,768.80	0.00
190200 - Admin RC - Building	864,162.00	864,162.00	0.00
190400 - Admin RC - Furnishings & Equip	187,066.71	187,066.71	0.00
190600 - Construction In-Progress	6,148.93	6,148.93	0.00
190650 - Building Improve - Lower Level	20,551.94	20,551.94	0.00
190850 - 2017 Toyota Sienna	16,980.37	16,980.37	0.00
190900 - Depreciation	(133,100.59)	(133,100.59)	0.00
<b>TOTAL 109000 - Building and Equipment</b>	<b>1,094,105.16</b>	<b>1,094,105.16</b>	<b>0.00</b>
<b>TOTAL Fixed Assets</b>	<b>1,094,105.16</b>	<b>1,094,105.16</b>	<b>0.00</b>
<b>Other Assets</b>			
<b>191000 - Loans Receivable</b>			
191300 - FEC Loan - Spain Properties	67,478.95	70,419.87	(2,940.92)
191400 - FEC Loan - Las Lagunas	9,058.23	9,507.50	(449.27)
191500 - FEC Loan - Elias Pina	10,000.00	0.00	10,000.00
<b>TOTAL 191000 - Loans Receivable</b>	<b>86,537.18</b>	<b>79,927.37</b>	<b>6,609.81</b>
<b>TOTAL Other Assets</b>	<b>86,537.18</b>	<b>79,927.37</b>	<b>6,609.81</b>
<b>TOTAL ASSETS</b>	<b>3,309,644.46</b>	<b>2,972,113.97</b>	<b>337,530.49</b>

# FINANCE REPORT

## 2020 YEAR-TO-DATE SUMMARY CONTINUED

	JUN 30, 20	DEC 31, 19	\$ CHANGE
<b>LIABILITIES &amp; EQUITY</b>			
<b>Liabilities</b>			
<b>Current Liabilities</b>			
<b>Other Current Liabilities</b>			
<b>250000 - FEC Cert of Theology (CoT)</b>			
250100 - CoT Church Portion	0.00	16,750.00	(16,750.00)
250200 - CoT Individual Portion	0.00	23,455.00	(23,455.00)
<b>TOTAL 250000 - FEC Cert of Theology (CoT)</b>	<b>0.00</b>	<b>40,205.00</b>	<b>(40,205.00)</b>
<b>260000 - Funds held on behalf of others</b>			
260001 - Solid Rock Community Church	200.00	0.00	200.00
<b>TOTAL 260000 - Funds held on behalf of others</b>	<b>200.00</b>	<b>0.00</b>	<b>200.00</b>
<b>TOTAL Other Current Liabilities</b>	<b>200.00</b>	<b>40,205.00</b>	<b>(40,005.00)</b>
<b>TOTAL Current Liabilities</b>	<b>200.00</b>	<b>40,205.00</b>	<b>(40,005.00)</b>
<b>Long Term Liabilities</b>			
<b>290000 - Long Term Liabilities</b>			
290100 - CSF Loan - Office Building	763,800.59	779,748.19	(15,947.60)
290200 - CSF Loan - 17 Toyota Sienna	12,409.47	15,152.01	(2,742.54)
290300 - CARES Act - PPP Loan	1,976.43	0.00	1,976.43
<b>TOTAL 290000 - Long Term Liabilities</b>	<b>778,186.49</b>	<b>749,900.20</b>	<b>(16,713.71)</b>
<b>TOTAL Long Term Liabilities</b>	<b>778,186.49</b>	<b>749,900.20</b>	<b>(16,713.71)</b>
<b>TOTAL Liabilities</b>	<b>778,386.49</b>	<b>835,105.20</b>	<b>(56,718.71)</b>
<b>Equity</b>			
<b>300000 - Opening Bal Equity</b>			
310100 - Unrestr-Bd Designated (Acc Res)	100,750.83	100,750.83	0.00
310200 - Unrestr-Bd Designated (IM)	259,613.62	259,613.62	0.00
310300 - Unrestr-Bd Designated (Health)	127,034.57	127,034.57	0.00
310400 - Unrestr-Bd Designated (Prop Inv)	267,593.40	267,593.40	0.00
320100 - Temp Restr - IM	306,991.75	306,991.75	0.00
320200 - Temp Restr - Church Planting	274,986.75	274,986.75	0.00
320300 - Temp Restr - Staffing	180,647.25	180,647.25	0.00
320900 - Temp Restr - Net Assets - Nonbudg	141,332.27	141,332.27	0.00
330100 - Perm Restr-Scholarship Fund	4,500.00	4,500.00	0.00
<b>TOTAL 300000 - Opening Bal Equity</b>	<b>1,663,450.44</b>	<b>1,663,450.44</b>	<b>26,277.00</b>
32000 - Unrestricted Net Assets	473,450.44	479,046.34	(5,487.90)
<b>Net Income</b>	<b>394,249.20</b>	<b>(5,487.90)</b>	<b>399,737.10</b>
<b>TOTAL Equity</b>	<b>2,531,257.97</b>	<b>2,137,008.77</b>	<b>349,249.20</b>
<b>TOTAL LIABILITIES &amp; EQUITY</b>	<b>3,309,644.46</b>	<b>2,972,113.97</b>	<b>337,530.49</b>

# FINANCE REPORT

## 2020 YEAR-TO-DATE OFFICE BUDGET

	JAN - JUN 20	YTD BUDGET	% OF BUDGET	ANNUAL BUDGET
<b>ORDINARY INCOME/EXPENSE</b>				
<b>Income</b>				
<b>400000 - FEC Office Revenue</b>				
410000 - FEC Ministries	635,164.62	599,000.00	107.84%	1,200,000.00
450000 - Shared Faith & Close the Gap	10,520.19	0.00	100.0%	70,300.00
460000 - Other Income	4,064.15	0.00	100.0%	35,000.00
<b>Total 400000 - FEC Office Revenue</b>	<b>649,748.96</b>	<b>599,000.00</b>	<b>110.31%</b>	<b>1,305,300.00</b>
<b>700000 - Initiative &amp; Other Revenue</b>				
<b>720000 - FEC Sponsored Events</b>				
720100 - Conference	120.00	30,000.00	.4%	35,000.00
<b>Total 720000 - FEC Sponsored Events</b>	<b>120.00</b>	<b>30,000.00</b>	<b>.4%</b>	<b>35,000.00</b>
<b>780000 - Other NB Funds</b>				
<b>Total 700000 - Initiative &amp; Other</b>	<b>210,990.22</b>	<b>30,000.00</b>	<b>703.3%</b>	<b>35,000.00</b>
<b>Total Income</b>	<b>860,739.18</b>	<b>619,000.00</b>	<b>139.05%</b>	<b>1,340,300.00</b>
<b>GROSS PROFIT</b>	<b>860,739.18</b>	<b>619,000.00</b>	<b>139.05%</b>	<b>1,340,300.00</b>
<b>Expense</b>				
<b>830000 - FEC Office Budget</b>				
<b>830100 - Operations</b>				
830110 - Audit Review	14,950.00	5,000.00	299.0%	6,000.00
830115 - Comm & Publications	17,433.68	20,000.00	87.17%	40,000.00
830120 - Inter-group Relations	191.50	2,000.00	9.58%	5,000.00
830125 - Office Expenses	40,933.19	32,000.00	127.92%	75,000.00
830130 - Travel & Meetings	9,662.70	31,500.00	30.68%	55,000.00
<b>Total 830100 - Operations</b>	<b>83,171.07</b>	<b>90,500.00</b>	<b>91.9%</b>	<b>181,000.00</b>
<b>830200 - Ministry</b>				
830210 - Benevolence	52.94	250.00	21.18%	500.00
830215 - Conference	5,419.03	10,000.00	54.19%	50,000.00
830220 - Education	16,645.00	30,000.00	55.48%	45,000.00
830225 - Church Multiplication	6,038.51	10,000.00	60.39%	20,000.00
830230 - Ministry Res & Internship	15,809.98	17,100.00	92.46%	40,000.00
830235 - Leadership Dev & Coaching	5,272.37	17,500.00	30.13%	30,000.00
830240 - LifeChange Camp	7,500.00	7,500.00	100.00%	15,000.00
830245 - Miracle Camp & Retreat Cnt	15,000.00	15,000.00	100.00%	30,000.00
830250 - Quizzing	5,914.27	8,400.00	70.41%	13,000.00
830255 - Retirement Savings Plan	58,362.90	65,000.00	89.79%	110,000.00
830260 - Salem Ranch	7,500.00	7,500.00	100.00%	15,000.00
<b>TOTAL 830200 - Ministry</b>	<b>143,515.00</b>	<b>188,250.00</b>	<b>76.24%</b>	<b>368,500.00</b>
<b>830300 - Personnel</b>				
830310 - Personnel	407,536.79	375,000.00	108.68%	753,000.00
<b>TOTAL 830300 - Personnel</b>	<b>407,536.79</b>	<b>375,000.00</b>	<b>108.68%</b>	<b>753,000.00</b>

	JAN - JUN 20	YTD BUDGET	% OF BUDGET	ANNUAL BUDGET
<b>830500 - Debt/Mortgage</b>				
830510 - Debt/Mortgage Repayment	17,070.40	16,500.00	103.46%	33,000.00
<b>TOTAL 830500 - Debt/Mortgage</b>	<b>17,070.40</b>	<b>16,500.00</b>	<b>103.46%</b>	<b>33,000.00</b>
<b>TOTAL 830000 - FEC Office Budget</b>	<b>651,293.26</b>	<b>670,250.00</b>	<b>97.17%</b>	<b>1,335,500.00</b>
<b>TOTAL Expense</b>	<b>651,293.26</b>	<b>670,250.00</b>	<b>97.17%</b>	<b>1,335,500.00</b>
<b>Net Ordinary Income</b>	<b>209,445.92</b>	<b>(51,250.00)</b>	<b>(408.68%)</b>	<b>4,800.00</b>
<b>Net Income</b>	<b>209,445.92</b>	<b>(51,250.00)</b>	<b>(408.68%)</b>	<b>4,800.00</b>

# FINANCE REPORT

## 2021 PROPOSED FEC BUDGET

	2018	2018	2019	2019	2020	2021
PROJECTED REVENUE	ADJ BUDGET	ACTUAL	ADJ BUDGET	ACTUAL	APPROVED	PROPOSED
FEC Revenue	1,140,000	1,116,489	1,096,000	1,201,398	1,200,000	1,240,000
Other	35,000	92,073	35,000	51,126	35,000	35,000
Conference	35,000	35,331	35,000	36,298	32,000	35,000
Shared Faith	-	-	-	18,974	73,300	89,436
<b>Total Projected Revenue</b>	<b>1,210,000</b>	<b>1,243,893</b>	<b>1,166,000</b>	<b>1,307,796</b>	<b>1,340,300</b>	<b>1,399,436</b>
<b>PROJECTED EXPENSES</b>						
<b>OPERATIONS</b>						
Audit & Review	5,320	5,660	5,400	9,800	6,000	7,000
Communications & Publications	50,000	38,116	40,000	37,212	40,000	40,000
Inter-group Relations	4,000	5,353	4,000	5,112	5,000	5,000
Office Expense	70,000	121,699	70,000	80,808	75,000	80,000
Travel & Meetings	70,000	49,765	55,000	54,955	55,000	55,000
<b>Total Operations</b>	<b>199,320</b>	<b>220,593</b>	<b>174,400</b>	<b>187,887</b>	<b>181,000</b>	<b>187,000</b>
<b>MINISTRY</b>						
Benevolence	500	497	500	1,500	500	500
Conference	50,000	49,022	50,000	60,361	50,000	50,000
Continuing Education	15,000	22,090	35,000	23,315	45,000	45,000
Church Multiplication Support	10,000	10,000	10,000	10,225	20,000	20,000
Ministry Residency & Internship	40,000	42,050	40,000	38,600	40,000	40,000
Leadership Development & Coaching	30,000	19,134	30,000	30,847	30,000	30,000
Lifechange Camp	15,000	15,000	15,000	15,000	15,000	15,000
Miracle Camp & Retreat Center	30,000	30,000	30,000	30,000	30,000	30,000
Quizzing	13,000	13,640	13,000	12,863	13,000	13,000
Retirement Plan	85,000	94,611	85,000	109,887	110,000	110,000
Salem Ranch	15,000	15,000	15,000	15,000	15,000	15,000
<b>Total Ministry</b>	<b>303,500</b>	<b>311,044</b>	<b>323,500</b>	<b>347,598</b>	<b>368,500</b>	<b>368,500</b>
<b>PERSONNEL</b>						
Personnel	787,500	773,334	772,500	739,303	753,000	773,100
<b>Total Personnel</b>	<b>787,500</b>	<b>773,334</b>	<b>772,500</b>	<b>739,303</b>	<b>753,000</b>	<b>773,100</b>
<b>CAPITAL</b>						
Capital	-	-	-	-	4,800	4,800
<b>Total Capital Expenses</b>	<b>-</b>	<b>-</b>	<b>-</b>	<b>-</b>	<b>4,800</b>	<b>4,800</b>
<b>DEBT/MORTGAGE</b>						
Debt/Mortgage Repayment	48,000	-	36,000	43,846	33,000	66,036
<b>Total Debt/Mortgage</b>	<b>48,000</b>	<b>-</b>	<b>36,000</b>	<b>43,846</b>	<b>33,000</b>	<b>66,036</b>
<b>TOTAL FEC BUDGET</b>	<b>1,338,320</b>	<b>1,304,971</b>	<b>1,306,400</b>	<b>1,318,633</b>	<b>1,340,300</b>	<b>1,399,436</b>



# FINANCE REPORT

## 401K CERSP

### FELLOWSHIP OF EVANGELICAL CHURCHES (FEC) CONGREGATION EMPLOYEES RETIREMENT SAVINGS PLAN

The FEC Congregational Employees Retirement Savings Plan was established December 1, 2000 to provide a retirement savings program for the employees of FEC churches. The plan is under the direction of the General Board. The FEC President, General Board Treasurer and Administrative Director are designated as positions authorized to transact business on behalf of the plan. The Administrative Director serves as Administrator for the plan. These individuals are bonded in accordance with government regulations for such pension plans.

FEC member churches that have adopted the plan may participate.

#### **Eligibility requirements for participation in the plan are:**

- Be employed by an FEC Church as a common-law employee (regardless of the individual's actual employment status);
- Be at least 21 years of age;
- Have at least three months of service prior to the next open enrollment; January, April, July or October 1st.

Seventy-nine (79) individuals between two (2) churches participated in the plan during the 2019 plan year.

Annually each member church determines the defined contribution amount for their employees.

The cumulative contributions plus investment earnings (or losses) provide a participant's benefit at retirement.

As of December 31, 2019, the ending account balance value of the plan was \$4,981,866.84.

# FINANCE REPORT

## 401K RSP

### FELLOWSHIP OF EVANGELICAL CHURCH (FEC) RETIREMENT SAVINGS PLAN

The FEC Retirement Savings Plan was established September 1, 1987 to provide a retirement savings program for FEC credentialed individuals, FEC affiliate organizations and the FEC Office staff. The plan is under the direction of the General Board. The FEC President, General Board Treasurer and Administrative Director are designated as positions authorized to transact business on behalf of the plan. The Administrative Director serves as Administrator for the plan. These individuals are bonded in accordance with government regulations for such pension plans.

#### **Eligibility requirements for participation in the plan are:**

- Be employed by the FEC Office, an FEC church or an FEC affiliate organization as a common-law employee (regardless of the individual's actual employment status);
- Be credentialed through FEC, except the term does not apply to non-licensed clerical, custodial and other support staff who are employed at the FEC Office, Miracle Camp and Retreat Center, LifeChange Camp and Retreat Center or the Christian Service Foundation;
- Complete 90 days of employment;
- Be at least 21 years of age;
- Have at least three months of service prior to the next open enrollment; January, April, July or October 1st.

Two-hundred thirty (230) individuals participated in the plan during the 2019 plan year.

Annually the General Board determines the defined contribution amount for plan purposes. The amount for the 2019 plan year is \$3,228 (\$269 monthly) plus an additional \$660 from the FEC elective deferral matching contributions program. The FEC elective deferral matching contributions program has 50% matching on elective deferrals up to \$1,320 per year.

The amount for the 2020 plan year is \$3,312 (\$276 monthly) plus an additional \$672 from the FEC elective deferral matching contributions program. The FEC elective deferral matching contributions program has 50% matching on elective deferrals up to \$1,344 per year.

The amount for the 2021 plan year is \$3,372 (\$281 monthly) plus an additional \$690 from the FEC elective deferral matching contributions program. The FEC elective deferral matching contributions program has 50% matching on elective deferrals up to \$1,380 per year.

The cumulative contributions plus investment earnings (or losses) provide a participant's benefit at retirement.

The plan provides an initial pre-retirement death benefit of \$90,000 for each participant. FEC paid \$27,031.71 in premiums for life insurance coverage and \$82,855.01 for deferred matching contributions during the 2019 plan year. As of December 31, 2019, the ending account balance value of the plan was \$14,607,370.38.

# NEWLY RECOGNIZED CHURCHES

## WAVE COMMUNITY CHURCH

Just a few months ago, Wave Community Church celebrated their 5 year anniversary. Though the celebration was postponed (thank you coronavirus), the milestone was just as significant. Moving from Kansas more than 6 years ago, my wife, Darla and I, have had many moments where we wondered if our church would survive. God has proven himself faithful time and time again and we have seen evidence that God's Spirit has made a way for our church to bring the Gospel to Deshler, Ohio and beyond for many years to come.

Starting out as a portable church, we faced many challenges from lack of set-up volunteers, to insufficient storage, as well as poor quality facilities. These struggles forced us to be as innovative as possible in our early days and we now have many humorous stories to share as a result of it.

About a year and a half after starting the church, our rental facility was scheduled to be demolished. This forced us into even worse conditions as we held two evening services in a conference room with our kids ministry meeting at a different location. Thankfully this season was short-lived as God opened the door for a downtown building to be available for sale not a day too soon. We purchased the old hardware store and began meeting there immediately.

Though our meeting conditions were much improved, we knew that we would need a longer renovation plan to make our facilities sustainable. Before beginning work on our own building, we invested about \$80,000 into a building next door and gave Deshler a Community Center. This building houses our local food pantry and is an open meeting location for many church events.

Shortly after completing the Community Center building, I received a phone call from the local pharmacy (next door to our hardware store) and was asked if we would purchase their building. God opened up huge doors for us to acquire more square footage and set our renovation plans in motion. Over the last 3 years we have been turning dilapidated downtown buildings into our future Church auditorium. We are now months away from completing our building project (following many delays from codes) and celebrating with a grand opening to our community.

Throughout our building transitions, we have continued to minister to people. We've started multiple addiction recovery groups, baptized around 50 people, and watched God do miracles in our church over and over again. The vision that we plan to unveil when our

building is completed is that we want our church to be known as being "For Deshler". We haven't always been seen as an asset to our community, but God has been changing hearts and giving us favor within the leadership of our village. We assist with work projects when available, and allow the village to use our out-buildings as the recycling center for our town.

We believe that God is preparing many hearts to turn to Him. Following our mind blowing Easter service, where we saw nearly 500 people in attendance, we have felt that God wants us to prepare for numerical growth. Completing our building is one step to that process, as is joining the FEC as a fully participating church. With local leadership in place, we feel prepared to enter a new season of ministry as a church prepared to preach the Gospel for generations.

I want to thank all those who have prayed for and invested time and energy in our church plant. We still trust God daily for provision and He always provides. Thank you to the FEC churches that have given and sowed into our ministry. We are forever grateful.

**Alex and Darla Ruhter**

# NEWLY RECOGNIZED CHURCHES

## HARVEST BIBLE FELLOWSHIP

It is my great privilege to share about the amazing church that I have fallen so deeply in love with. Located in the rural town of Ellsworth, Kansas, Harvest Bible is a church dedicated to fulfilling its mission to proclaim the Gospel of Christ and teach it to others in a compassionate way. The church is full of people of all ages united in a love of Christ desiring to serve the Lord in our community.

Through our weekly Bible studies, we enjoy our times of fellowship as we dive deeper into the Word of God and seek to find tangible ways to share that with the rest of the community. Our church is also blessed with a lot of great young people whom we seek to engage in new and exciting ways to help them deepen their relationship with the Lord in order to prepare them as they head into the world of adulthood.

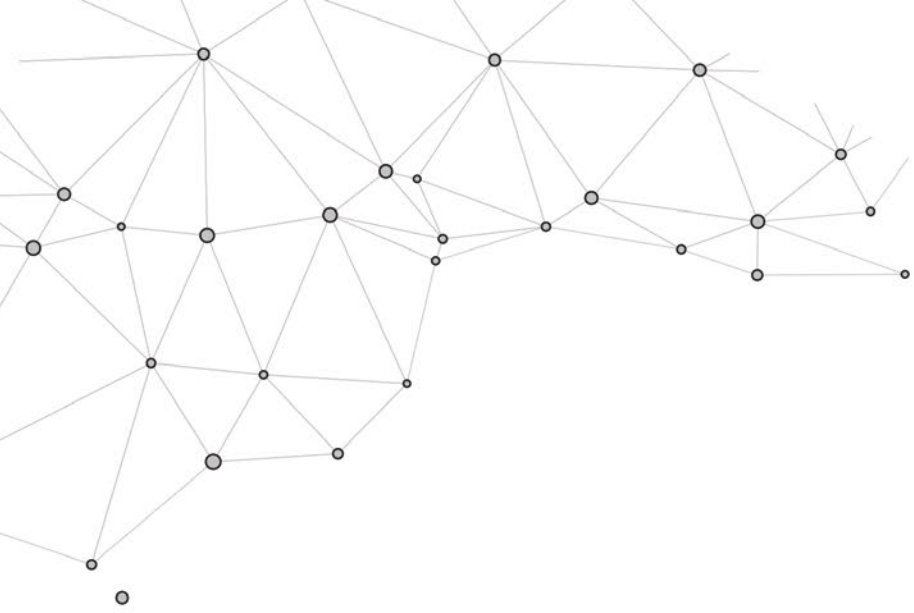
We are excited about the opportunity to join the Fellowship of Evangelical Churches because we recognize the fact that we can do more to share the Gospel of Christ in partnership with others than we can by ourselves. Partnering with other churches in Kansas who are a part of the Synergy Network as well as encouraging, praying, and supporting the new church plant in Lyons, Kansas, are all ways we can be better together than separate. We are looking forward to seeing the amazing way that the Lord works as we embark upon this journey with the FEC. We are genuinely excited to be a part of something greater than ourselves.

Sincerely,

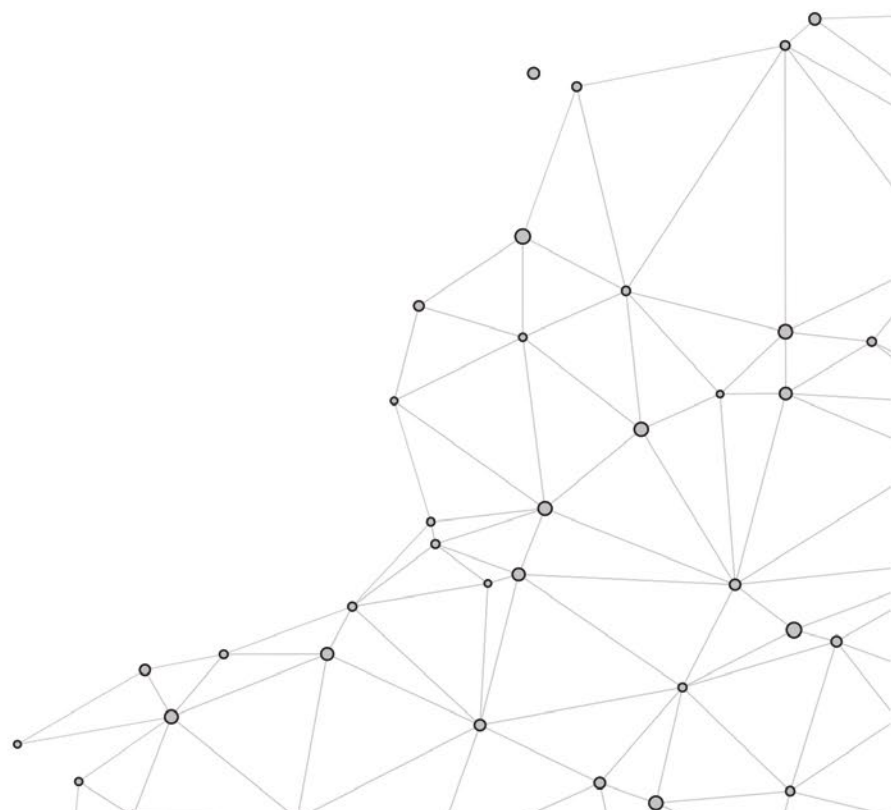
**Marc Compton**

Lead Pastor

Harvest Bible Church



# FEC PEOPLE



# CURRENT BOARD MEMBERS

## GENERAL BOARD

Nate Hamblin, *Chairman*  
Kip Kratche, *Vice Chairman*  
Darla Rupp  
Cal Rychener  
Chris Genders  
Mark Biehl, *Elder Board Chairman*  
Gene Pankratz, *Treasurer*  
Abigail Hyde  
Dave Walters  
Jamie Farrell (*through Conference 2020*)  
Roger Andrews (*through Conference 2020*)  
Rocky Rocholl, *FEC President*

## ELDER BOARD

Mark Biehl, *Chairman (through Conference 2020)*  
Neal Hauser (*through Conference 2020*)  
David Reimer  
Randy Evers  
Bruce Rocke  
Rocky Rocholl, *FEC President*  
Donald Roth, *Elder Emeritus*  
Charles Zimmerman, *Elder Emeritus*

## INT'L BOARD

Tim Bertsche, *Chairman*  
David Windham, *Vice Chairman*  
Chelsea Andres, *Treasurer and Secretary*  
Craig Smith  
Heather Kimball  
Tony Uribes  
Hal Lehman, *FEC Director*

# NEWLY NOMINATED MEMBERS

## GENERAL BOARD

**Mike Barter - Senior Pastor - Grace Community Fellowship - Hillsboro, KS**

**Tell us about yourself.**

My name is Mike Barter. I live in Newton, Kansas and work at Grace Community Fellowship Church in Hillsboro, Kansas. I'm married to Mindy. She's a high school English teacher and assistant volleyball coach in Haven, Kansas.

**How have you been involved in FEC? What is your current ministry role?**

I attended Grace Community Church in Newton, Kansas for 3 1/2 years - serving on the men's council and as an elder. I currently serve as Lead Pastor of Grace Community Fellowship Church in Hillsboro, KS, and am involved with Synergy Kansas.



**Give us a brief window into your personal faith journey.**

I grew up in a Christian home and was actively involved in church activities through high school. I was saved my freshman year of college after realizing that for years I had been living out my parents' faith and had never made a personal commitment to follow Christ.

In 2005, while working as a full-time firefighter, I began pursuing my M. Div. in Christian Ed, and Admin. In 2011, I left the fire service after 12 1/2 years to serve as a lead pastor (served 4 years). In 2018, I accepted the call to my current ministry position.

**What are three words that describe you?**

Affable, Student, Servant.

**Who is someone you admire, and why?**

Steve Shadrach. He is one I believe could truly say, "imitate me as I imitate Christ". He is a humble leader and a man of character. He has invested years into the lives of college students with the goal of mobilizing them to take the gospel to the ends of the earth. He has probably disciplined hundreds of students, as well as (through his organization) trained and developed thousands of leaders for that same purpose.

**What are your top pet peeves?**

Getting upset with someone for personal-preference expectations as well expectations not communicated.

**What's a typical day like for you?**

Organized flexibility. I begin with a plan: focusing on those things that have to get done, need to get done and can wait. From there I try to stay flexible, making time (if possible) for things that come up during the day. I try to make sermon preparation priority for Monday and Tuesday, which then allows for some flexibility the rest of the week.

**Do you have any skills or talents that most people don't know about?**

I have 21 flight hours including having completed a solo cross-country flight, during which I got a bit lost and had to have flight control guide me to the airport that I had missed.

**When you were 10 years old, what did you want to be when you grew up?**

I don't think at 10 I was thinking that far ahead. (I'm not a planner!) By end of high school, I decided I wanted to be an airline pilot (my grandfather was a airline mechanic for Ozark Airlines/ TWA) and went to college to pursue just that until I realized that I get air sick really easily (and it's expensive!!).

**What is one thing you want to make sure you do before you die?**

I would love to catch a photo/trophy-worthy fish. A fish that people would say: "that fish is awesome, you need to mount that on your wall" (not that I would ever mount a fish on my wall).

# NEWLY NOMINATED MEMBERS

## GENERAL BOARD

### Holly Figg – Great Oaks Community Church – Germantown Hills, IL

#### **Tell us about yourself.**

My name is Holly Figg. My husband Karl and I have five grown children - Caleb, Micah, Anna, Joshua & Simeon. Our son Caleb is married to Bethany. We are blessed to be grandparents to their 2 foster grandchildren, James and Chase, ages 5 & 3. We live in Germantown Hills IL, & have since '97. My husband is retired from Caterpillar; we love volunteering together.



#### **How have you been involved in FEC? What is your current ministry role?**

As a couple, my husband and I are a part of and involved in Great Oaks Community Church & have been very invested in the past in the Basque ministry. Currently we host a Life Group, & I volunteer by greeting, working weekly with kids' ministry check-in & mentoring, as well as being mentored. I'm one of the leaders of a local Moms In Prayer group.

#### **Give us a brief window into your personal faith journey.**

I came to Christ as a young girl and I have owned my faith more and more on my journey. The last 15 years I can see ways Christ has helped me better understand the mystery of Him, and greatly anticipate coming to know Him better for an eternity (as He is vast and beyond understanding in so many ways). Jesus has been showing me recently - It's not the What that's important; it's the Who, i.e., Not to worry or become preoccupied about the What of the future, but rest in knowing Who will be with me in whatever the future holds. He is so good and is the only one who can help me love Him well and love others well.

But now, this is what the Lord says—He who created you, Jacob, He who formed you, Israel: “Do not fear, for I have redeemed you; I have summoned you by name; you are mine. When you pass through the waters, I will be with you; and when you pass through the rivers, they will not sweep over you. When you walk through the fire, you will not be burned; the flames will not set you ablaze. For I am the Lord your God, the Holy One of Israel, your Savior; (Isaiah 43:1-3).

#### **What are three words that describe you?**

I asked my husband. He said I'm sweet, compassionate & fun-loving.

#### **Who is someone you admire, and why?**

I admire one of my mentors, Betty McCoy. She is Godly & authentic. She truly cares and rejoices with me when I rejoice & weeps with me when I weep. As a young mom when I was concerned about some areas of my kids' lives, the first thing she did was bring me with her to Jesus in prayer regarding those concerns. She is one of the pictures to me of what Christ is like.

#### **What are your top pet peeves?**

This is kind of a silly one, but I don't like hearing the phrase, “It is what it is.” Also, when I call a number and am asked to choose options, I'd rather just talk with a person directly.

#### **What's a typical day like for you?**

I get up around 7 and get ready for the day with breakfast and of course, coffee. I read the You Version Bible plan I'm on (in Ezekiel right now). Depending on the day, I either watch the grandkids, do chores, get together for Bible Study or prayer with friends, hang out with my dad, or volunteer with Karl at a local resale store which gives proceeds back to the community. Over and/ or after dinner we catch up with our youngest son Simeon who is living with us. Karl and I typically go on one or two walks throughout the day or evening. Before bed we typically watch an episode or two of Hogans Heroes (we think Schultz is hilarious) or McHale's Navy.

#### **Do you have any skills or talents that most people don't know about?**

I sew and have most recently enjoyed sewing dresses for Haitian orphans organized by a retired teacher in our community.

#### **When you were 10 years old, what did you want to be when you grew up?**

A nurse

#### **What is one thing you want to make sure you do before you die?**

My deep answer is I'd like to finish well. I'd like to travel with my husband to Lake Louise in Banff and to Prince Edward Island.



# NEWLY NOMINATED MEMBERS

## ELDER BOARD

**Brandon Risch – Senior Pastor – Crossview Church – Grabill, IN**

**Tell us about yourself.**

My name is Brandon Risch—my family and I live in Fort Wayne, IN, and I've been the Lead Pastor of Crossview Church for the past 6 years. My wife, Candace, and I have been married for 15 years and have 3 awesome kids: Ella (13), Ethan (10), and Brevyn (7) ... and a mini golden doodle named Rudy, if that counts.

**How have you been involved in FEC? What is your current ministry role?**

For the past 6 years I've served at Crossview Church as the Lead Pastor. My wife has been involved with FEC pretty much her whole life as part of an FEC missionary family (Steve and Pat Nelson).



**Give us a brief window into your personal faith journey.**

Basketball used to be my life and god. After year two of playing basketball at a small college, living the corrupted life with my teammates, and being completely selfish—God began to wake me up from my slumber. I remember looking outside my window in my one bedroom apartment thinking, “There’s got to be more to life than this.” Within this time frame, my older sister came to know Jesus and started inviting me to hang out with some of her new Christian friends. Slowly but surely God kept His hand of grace upon me until one night after coming home from the club in the early hours of the morning, I had such a great conviction come over me. I sensed the powerful presence of God and His call to follow Him. So I knelt down on my apartment living room floor and wept before the Lord, telling Him that I am all His. The next day I found a Bible and started reading in the Psalms (because that’s the only book I could kind of understand at the time!). My hunger for Jesus and His Word grew like crazy in the days that followed. I would never be the same again! Praise God!

**What are three words that describe you?**

Others have described me as genuine, joyful, and passionate.

**Who is someone you admire, and why?**

Billy Graham. The way he preached the Word of God was so pure, simple, yet powerful. The way he conducted his life was one of humility, integrity, and faithfulness. His love for God spilled over onto loving others, even those in which he disagreed with.

**What are your top pet peeves?**

Velcro. The sound of it being pulled apart makes me cringe.

**What’s a typical day like for you?**

When I wake up, it’s me and Jesus time - unrushed time spent in His Word and in prayer. Head to the office and spend all morning in message prep. Afternoon is spent in other pastoral responsibilities (meetings, counseling, strategic planning, vision-casting, shepherding, etc.) Get home and spend time with my kids and wife, hoping to create sweet memories. Get a quick workout in, read a great book for at least 30 minutes, and relax for the rest of the evening. Strive to walk in God’s rhythm of grace throughout the day and be aware of the people God places in front of me to love with His love!

**Do you have any skills or talents that most people don’t know about?**

Spinning a basketball on every finger.

**When you were 10 years old, what did you want to be when you grew up?**

I wanted to play basketball for the Indiana Hoosiers under Coach Bob Knight. Play in the NBA and then eventually coach basketball for the rest of my life.

**What is one thing you want to make sure you do before you die?**

Lead one more person to Christ.

# NEWLY NOMINATED MEMBERS

## ELDER BOARD

**Jonathan Farrell - Senior Pastor - Grace Church - Morton, IL**

**Tell us about yourself.**

My name is Jonathan Farrell. My wife Jaime and I have four kids – Jorja (13), Jolie (11), Jemma (9), and Job. We live in Morton, IL, where God has allowed us to serve His church at Grace since 2007.

**How have you been involved in FEC? What is your current ministry role?**

Serving at Grace has introduced me to FEC over the past 13 years. My role at Grace has changed several times, and this is my third year serving as the Senior Pastor.

**Give us a brief window into your personal faith journey.**

God rescued me from a life apart from Him at an early age (my parents followed Jesus and had a high value for the local church); throughout my life God has been kind to provide older men who have mentored and disciplined me and it was my youth pastor, Patrick, in Junior High and High School who provided a window into what serving Jesus and His church looked like in a vocation setting. Since then, God has affirmed through others and in my own heart a continued calling to the Church. In the meantime, He's provided me with an incredible partner in life and ministry, and our children – all of whom are a tremendous mirror for me of my own faith and character.



**What are three words that describe you?**

Yikes. Better ask Jaime or my kids!

**Who is someone you admire, and why?**

When I think of people I esteem and value their input and voice in my life, I think of my father-in-law, Jon, who we share life with in Morton, and my Elder Chairman, Tim. Both are men faithfully serving Christ in their lives, one as he leads the Rescue Ministries in Peoria, the other who leads a medical practice and serves our church sacrificially, both who love Jesus and their families so well.

**What are your top pet peeves?**

When I hear ice being chewed, I get cold chills so it's probably at the top of my list. Open doors and lights left on at my house may be a close second (though it reminds me I'm becoming the stereotypical dad who complains about the utility bill).

**What's a typical day like for you?**

I play basketball a couple mornings a week before work, but then on the other days often get to participate in helping kids get to school (we have a one-mile commute to Church/Work, as well as all our schools which is awesome!). Serving with a staff is a privilege and often involves quite a bit of variety from day to day. My time is spent among leadership, shepherding and preaching priorities so I work hard to hold those in proper tension each week. We cherish family dinners together, while navigating practice schedules, music lessons, and the sweet messiness of family life.

**Do you have any skills or talents that most people don't know about?**

None. Thankfully our kids got most of their genes from Jaime so there is hope for them.

**When you were 10 years old, what did you want to be when you grew up?**

Starting shortstop for the Cincinnati Reds.

**What is one thing you want to make sure you do before you die?**

To the spirit of the "bucket list" question, I'm excited for "second life" with Jaime after the kids are all kicked out of the house. I hope we can visit Italy someday together (she's been and has an uncle who lives there). Whatever and however long it is, I pray I and we together can finish serving well.

# Save the Date

F E C   C O N F E R E N C E   2 0 2 1

---

Archbold Evangelical Church  
Archbold, Ohio

July 22-23, 2021